



Collection 2021

Mercedes-Benz



# INTERACTIVE COLLECTION

In this interactive Collection Catalogue, you can easily navigate within the document using internal and external links. Clicking on the elements marked with the respective icons offers the following options:

With one click you will reach the parent content level.



Navigate within the Collection Catalogue using internal links.



One click will take you to external website links.

Navigate through our Collection 2021.

2021

One click on the desired image will directly lead you to the respective chapter.

# COLLECTION



ACCESSORIES 021



TRAVEL & OUTDOOR 038



WORK & LIVING 051



SPORTS 062



CLASSIC 071



MOTORSPORTS 086



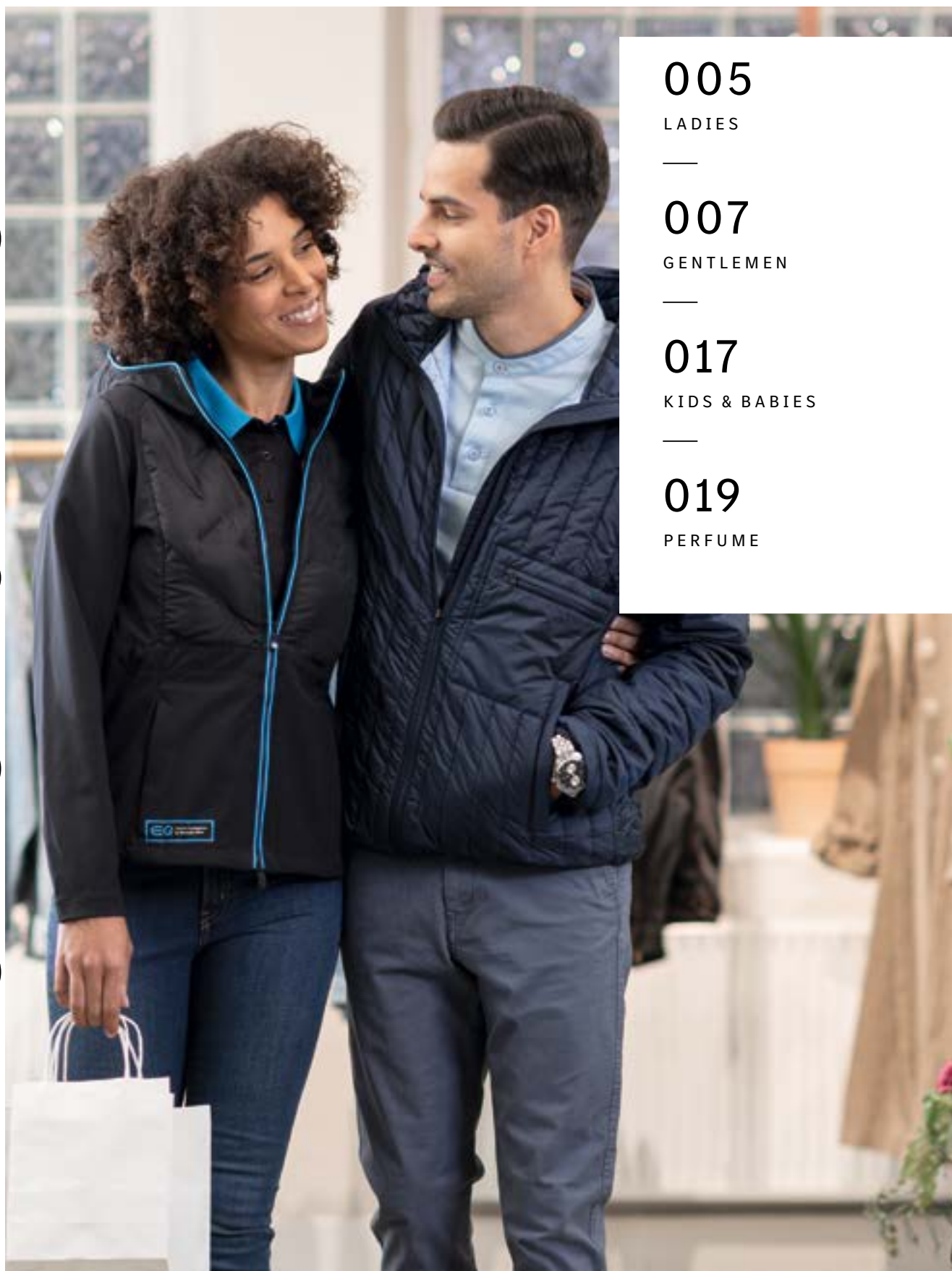
MERCEDES-AMG 101



CHILD SAFETY 126

One click on the desired sub-chapter will take you directly to the respective page.

# FASHION & BEAUTY



005

LADIES

—

007

GENTLEMEN

—

017

KIDS & BABIES

—

019

PERFUME



# ZIP UP YOUR MERCEDES.



EQC 400 4MATIC: Electrical consumption, combined Average CO<sub>2</sub> emissions 20.8-19.7 kWh/100 km: 0 g/km



## WOMEN'S HYBRID JACKET

Black/energy blue. 100% polyester. Water-repellent. Width- and size-adjustable hood. Coated 2-way front zipper. Various pockets. Waist width can be adjusted. Width-adjustable sleeve seam with press-stud. Taped and wadded quilting area in the front and back section following the seat structure of the EQC. Slim fit. Sizes: XS-XL.

**B66958954-8958**



#### RUANA FLEECE

Black/anthracite. 100% polyester fleece. Reversible. Machine washable. Made for Mercedes-Benz by FRAAS. One size. Dimensions approx. 150x160 cm.

**B66958974**



#### LADIES' TOP

Beige. 99% viscose/1% elastane. Crew neck with silver-coloured press stud in rear. High-gloss neck and insert in the front. Longer cut at the rear. Side vents. Modern fit. Sizes: XS-XL.

**B66958923-8927**



#### LADIES' JACKET

Black. 53% cotton/44% polyester/3% elastane. Crew neck. Front zipper. Cross-cut seam with attached peplum. Slim fit. Sizes XS-XL.

**B66958918-8922**



#### LADIES' POLO SHIRT

Black/energy blue. 100% polyester. Breathable and moisture regulating thanks to Coolmax® EcoMade. Vertical perforation for additional venting at the rear. Single-rib cuffs. Tri-coloured neck band. Button front. Slim fit. Sizes: XS-XL.

**B66958875-8879**



#### LADIES' JACKET

Black/gold-coloured. Outer material 100% polyester, taffeta lining 55% polyester/45% viscose. Sewn-on pockets. Zipped chest pockets. Drawcord for adjustable waist width. Elastic ribbed inserts around the waist. Stand-up collar and cuffs with single rib. Modern fit. Embroidered, tonal Mercedes star on circular badge on the left sleeve. Black band with woven, golden identity pattern on the inside at the drawstring around the waist. Sizes XS-XL.

**B66958656-8660**



#### LADIES' BLOUSE-STYLE SHIRT

Front section 75% viscose/25% silk, sleeves and back 100% viscose. Short sleeves. Side vents. Modern fit. Tonal, embroidered Mercedes star on the left upper arm. Sizes XS-XL.

**B66958661-8665**

## ENTER THE ADVENTURE.

### MEN'S FUNCTIONAL COAT

Silver-grey. 100% polyamide outer material, 100% polyester inner lining. Bonded inner seams. Hood with zipper. Concealed snap fastening. Side flap and water-resistant zipped pockets. Zipped breast pocket with outlet for headphones cable. Width-adjustable sleeves. Modern fit. Sizes: S-XXL.

**B66958681-8685**



—  
DRESSED TO  
DISCOVER.  
—



#### MEN'S SOFTSHELL JACKET

Black/grey blend. 100% polyester. Wind- and water-repellent. High-closing collar. Width- and size-adjustable hood with zipper. Width-adjustable hem. Width-adjustable sleeve end with inside cuffs with thumb hole. Strap for headphones cable. Modern fit. Sizes: S-XXL.

**B66958696-8700**

#### MEN'S CAGOULE

Black/grey blend. 100% polyester. Low weight. Longer cut back section with ventilation slits. Side pockets with water-resistant zippers. High-closing, water-resistant front zipper. Water-resistant taped seams. Hood adjustable in size and width. Cuffs and seam adjustable in width. Elastic cuffs with thumb hole on sleeve ends. Incorporated bag in the back section for compact storage of jacket. Modern fit. silver-coloured Mercedes star print on the left sleeve, black Autoblock zip puller with Mercedes star in 3D look, "Mercedes-Benz" lettering on the inside of the seam. Sizes: S-XXL.

**B66958701-8705**



# ALWAYS PROPERLY DRESSED.



## MEN'S 2-IN-1 JACKET

Black/red. 100% polyester. Windbreaker with removable hood and cord to adapt the width. Quilted inner jacket with stand-up collar. Metal underarm ventilation eyelets. Reflective inserts on front and back. Reflective print on the hood, sleeves and back. Cuffs with adjustable Velcro fastening. High closing front zipper. Various pockets. Loose fit. Sizes S-XXXL.

B67871233-1238



## MEN'S SOFTSHELL JACKET

Black/red. Outer material 100% polyester, inner material 100% polyester fleece. Removable, width- and size-adjustable hood. Cuffs with adjustable Velcro fastening. Metal underarm ventilation eyelets. Various pockets. Width-adjustable waistband. High-closing front zip fastening with chin guard. Reflective print on hood, sleeves and back. Modern fit. Sizes: S-XXL.

B67871239-1244



#### **MEN'S WINTER PARKA**

Black. Outer material and padding 100% polyester, taffeta lining 100% nylon. Water- and wind-resistant. 2-way front zip closing. Detachable width- and size-adjustable hood. Adjustable hem. Adjustable cuffs. Various pockets. Size S-XXXL.

**B67871177-1182**



#### **MEN'S DRIVER'S GILET**

Black/red. 100% polyester. Stand-up collar made of outer and ribbed material. High-closing zipper. Reflective piping on front and back. Reflective print on back. Various inside pockets. Loose fit. Sizes S-XXXL.

**B67871276-1281**



#### **MEN'S DRIVER'S BOMBER JACKET**

Black/red. Outer material 100% polyester with PU coating, inner lining and padding: 100% polyester. Stand-up collar, waistband and cuffs made of ribbed material. Metal underarm ventilation eyelets. Reflective piping on front and back. Reflective print on back. High closing front zipper. Various pockets. Loose fit. "Mercedes-Benz Trucks you can trust" print on left chest, silver Mercedes star print on left upper arm. Sizes S-XXXL.

**B67871227-1232**

QUALITY.  
STYLE.  
MERCEDES.



#### MEN'S PERFORMANCE JACKET

Blue. 100% polyester. Water-repellent. Underarm ventilation thanks to lasering. Front zipper covered with press-stud flap. Various pockets. Rubber drawcord to adjust the width on hood and seam. Made for Mercedes-Benz by Tommy Hilfiger. Sizes: S-XXL.

B66959029-9033



#### MEN'S SOFTSHELL JACKET

Black/silver-grey. 100% polyester. Zipped and size-adjustable hood. Width-adjustable cuffs and with additional elastic cuffs, which can be pulled out if necessary. Ventilation studs in underarm area. Inner lining with two attached pockets. Sizes: S-XXL.

**B67871263-1267**



#### MEN'S HYBRID JACKET

Black/energy blue. 100% polyester. Water-repellent. Width- and size-adjustable hood. Coated 2-way front zipper. Various pockets. Width adjustable at lower edge. Width-adjustable sleeve seam with press-stud. Taped and wadded quilting area in the front and back section following the seat structure of the EQC. Slim fit. Sizes: S-XXL.

**B66958880-8884**



#### MEN'S JACKET

Dark blue. Outer material 100% polyamide, inner lining and wadding in 100% polyester. Water-repellent DWR impregnation. Camlock front zipper. Various pockets. Elastic edge binding on hood, cuffs and hem. Modern fit. Dark blue badge with silver-coloured 3D Mercedes star on sleeve. Sizes: S-XXL.

**B66958928-8932**



## SWEATSHIRT

Unisex. Grey blend. 60% cotton/40% polyester. Yoke in shoulder area and in front and back section. Single-rib cuffs, crew neck and hem. Tri-coloured neck band. Light blue crescent moon on the inside. Modern fit. Sizes: XS-XXL.

**B66958859-8864**



## MEN'S JOGGING BOTTOMS

Grey blend. 93% cotton/7% polyester. Elastic waistband with drawstring and cord. Pockets on the side and rear with bonded. Stripe insert on the side. Hem rounded off with single rib. Slim fit. Made for Mercedes-Benz by Tommy Hilfiger. Sizes: S-XXL.

**B66959009-9013**



## MEN'S SWEATSHIRT

Grey blend. 93% cotton/7% polyester. Crew neck. Dividing seams on front and sleeves. Slim fit. Made for Mercedes-Benz by Tommy Hilfiger. Sizes: S-XXL.

**B66959014-9018**



#### MEN'S POLO SHIRT

White/energy blue. 100% polyester. Breathable and moisture regulating thanks to Coolmax® EcoMade. Single-rib cuffs. Tri-coloured neck band. Button front. Upper back section with diamond-shaped knitted pattern following the seat structure of the EQC for additional ventilation. Slim fit. Sizes: S-XXL.

**B66958870-8874**



#### MEN'S T-SHIRT

100% Supine cotton. Short V neck. Tonal neck band with silver grey stripe. Modern fit. Sizes XS-XXL.

White **B66958722-8727**  
Black **B66958716-8721**



#### MEN'S POLO SHIRT

Black. 100% cotton. Short-sleeve shirt with twisted zip and black zip puller. Zipper front with stylish bonding. Patterned neck and side groove bands. Single-rib collar and cuffs. Elongated back. Modern fit. Sizes S-XXL.

**B66958706-8710**



#### MEN'S POLO SHIRT

100% cotton. Naturally cools the skin. Single-rib polo collar and cuffs. Concealed button band with three tonal buttons. Side vents. Slim fit. Made for Mercedes-Benz by Tommy Hilfiger. Sizes: S-XXL.

Red **B66959004-9008**  
Black **B66959038-9042**



#### MEN'S POLO SHIRT

White. 100% cotton. Naturally cools the skin. Single-rib polo collar. Zipper front with stylish bonding. Sleeve seam and inner seam bonded. Side vents with bonded, black catches on the outside. Slim fit. Made for Mercedes-Benz by Tommy Hilfiger. Sizes: S-XXL.

**B66958999-9003**



#### MEN'S POLO SHIRT

Grey. 100% cotton. Short-sleeve shirt with twisted zip and black zip puller. Zipper front with stylish bonding. Patterned neck and side groove bands. Single-rib collar and cuffs. Elongated back. Modern fit. Sizes S-XXL.

**B66958711-8715**



#### MEN'S POLO SHIRT

Black/red. 100% cotton. Single-rib collar and cuffs. Button band. Red woven stripes on the collar and cuffs. Band on side vents, Actros radiator grille elements imprinted on button band and in the neck. Modern fit. Sizes S-XXXL.

**B67871245-1250**



#### MEN'S POLO SHIRT

Light blue. 100% cotton. Stand-up collar and button band. Collar ends with dark blue piping in denim look. Three-coloured neck band. Single rib at cuff with woven-in dark blue stripe. Cross-cut seam in front section. Chest pocket with button. Inside of side vents trimmed with three-coloured band. Modern fit. Sizes: S-XXL.

**B66958865-8869**



#### MEN'S T-SHIRT

Black. 95% cotton/5% elastane. Slim-fit. Sizes S-XXL.

**B66958319-8323**



#### MEN'S T-SHIRT

Black/dark grey/white. 100% cotton. Crew neck. Modern fit. Tyre print and "Sprinter" lettering at the front. Tonal star logo embroidered on left sleeve. Sizes: S-XXL.

**B67871257-1261**



# YOU'RE NEVER TOO YOUNG FOR MERCEDES.



## BOYS' T-SHIRT

Light blue. 100% cotton. Short sleeves.  
Crew neck with blue ribbed cuffs.  
Patterned neck tape. Robots print on front.  
Modern fit. Silver-grey Mercedes star  
on left sleeve. Sizes 116/122-152/158.

**B66954460-4463**



#### BABY SUIT

White with colourful contrasts. 100% cotton.  
Double snap fastening. Silver-coloured  
Mercedes star print in nape.  
Sizes 56/62, 68/74, 80/86.

**B66955747-5749**



#### GIRLS' T-SHIRT

Off-white/red. 100% cotton. Short sleeves. Boat neck. Patterned neck  
tape. Modern fit. Reversible sequins with red heart and Mercedes star.  
Sizes 116/122-152/158.

**B66954296-4299**

—  
TIME TO PLAY.  
—

# BLOSSOM UP.



## MERCEDES-BENZ ROSE FOR WOMEN, SET OF TWO

Eau de Toilette and body lotion.  
Eau de toilette content approx. 30 ml,  
body lotion content approx. 100 ml.

**B66956007**



## MERCEDES-BENZ ROSE FOR WOMEN

Eau de toilette. Fragrance for women.  
Atomiser.

Contents  
approx. 30 ml **B66958574**

Contents  
approx. 60 ml **B66959409**



## MERCEDES-BENZ WOMAN

Eau de parfum. Fragrance for women.  
Atomiser.

Contents  
approx. 30 ml **B66958770**

Contents  
approx. 60 ml **B66958769**



## MERCEDES-BENZ WOMAN

Eau de toilette. Fragrance for women.  
Atomiser.

Contents  
approx. 30 ml **B66955856**

Contents  
approx. 60 ml **B66956744**



## MERCEDES-BENZ FOR MEN, SET OF 2

Eau de Toilette and shower gel.  
Eau de Toilette content approx. 40 ml,  
shower gel content approx. 100 ml.

**B66956006**



## MERCEDES-BENZ FOR MEN

Eau de toilette. Men's fragrance. Atomiser.

Contents  
approx. 40 ml **B66958372**

Contents  
approx. 75 ml **B66958225**



## MERCEDES-BENZ COLOGNE FOR MEN

Eau de toilette. Men's fragrance. Atomiser.

Contents  
approx. 120 ml **B66959316**



## MERCEDES-BENZ SELECT

Eau de toilette. Men's fragrance. Atomiser.

Contents  
approx. 50 ml **B66958767**

Contents  
approx. 100 ml **B66958766**



## MERCEDES-BENZ MAN

Eau de toilette. Men's fragrance. Atomiser.

Contents  
approx. 50 ml **B66958631**

Contents  
approx. 100 ml **B66958630**



## MERCEDES-BENZ MAN GREY

Eau de toilette. Men's fragrance. Atomiser.

Contents  
approx. 50 ml **B66956207**

Contents  
approx. 100 ml **B66956206**



## MERCEDES-BENZ SELECT NIGHT

Eau de parfum. Men's fragrance. Atomiser.

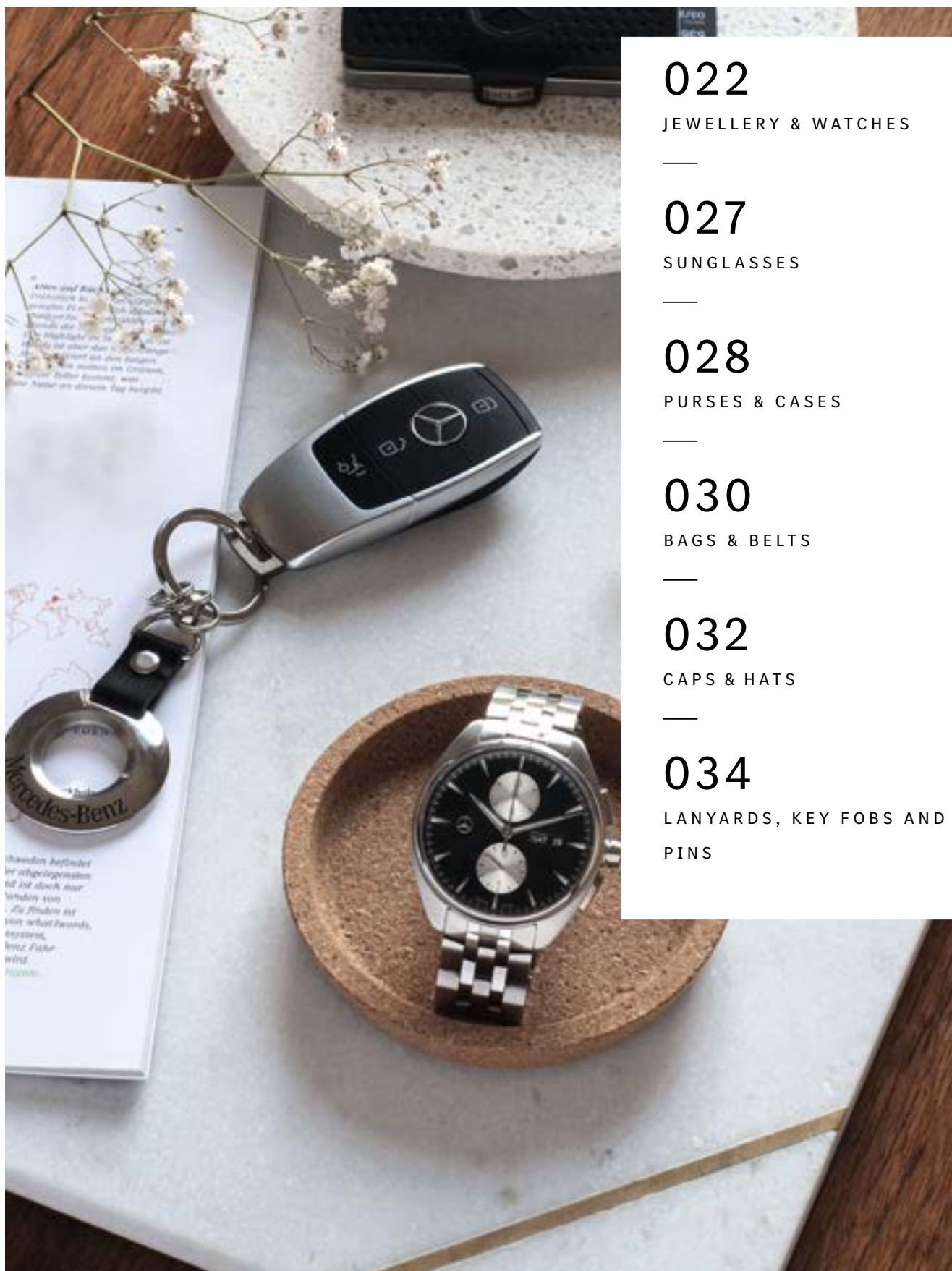
Contents  
approx. 50 ml **B66956177**

Contents  
approx. 100 ml **B66955855**



One click on the desired sub-chapter will take you directly to the respective page.

# ACCESSORIES



022

JEWELLERY & WATCHES

027

SUNGLASSES

028

PURSES & CASES

030

BAGS & BELTS

032

CAPS & HATS

034

LANYARDS, KEY FOBS AND  
PINS



**MEN'S BUSINESS  
CHRONOGRAPH WATCH**

Stainless steel case, with part black PVD coating. Black dial with sunray embossing in the counter eyes and steel-coloured hour markers with Super-LumiNova® luminous detail. Luminous hands. Water-resistant to 10 ATM. Diameter approx. 42 mm. Ronda 5030 Swiss quartz movement. Swiss made.

**B66953530**



**24/7 IN  
STYLE.**

**MEN'S MERCEDES-BENZ  
AUTOMATIC WRISTWATCH**

Stainless steel case with polished and matt finish. Black dial with blue minute markers. Silver-coloured hands and indices with Super-LumiNova® detail. Anti-reflective sapphire glass on both sides. Stainless steel strap with polished and matt finish. Date feature. Water-resistant to 10 ATM. Diameter 43 mm. ETA 2824 automatic movement. Swiss made.

**B66953968**



### WOMEN'S SPORT FASHION CHRONOGRAPH M3

Stainless steel case with rose gold-coloured PVD and white ceramic bezel. White dial with pink gold-coloured applications. Rose gold-coloured hands with Super-LumiNova® detail. Swarovski® crystals as hour markers. Anti-reflective mineral glass on both sides. White calfskin strap. Water-resistant to 10 ATM. Diameter 39 mm. Ronda 5030 quartz movement. Swiss made.

**B66954170**



### WOMEN'S WRISTWATCH, BASIC

Stainless steel case with rose gold-coloured PVD coating. Mother-of-pearl dial. Rose gold-coloured hands with Super-LumiNova® detail. Anti-reflective mineral glass on both sides. Beige leather strap, black paintwork on the cut edges. Diameter 35 mm. Ronda 702 quartz movement.

**B66954184**



### MEN'S SPORT FASHION M3 CHRONOGRAPH

Stainless steel case with black PVD coating. Black dial. Hour and minute hands, as well as blue second hand with Super-LumiNova® detail. Anti-reflective mineral glass on both sides. Black nylon strap, blue woven coloured stripes running through the middle. Water-resistant to 10 ATM. Diameter 42 mm. Ronda 5030 quartz movement. Swiss made.

**B66954061**



### MEN'S WRISTWATCH, BASIC

Stainless steel case. Brilliant blue dial. Steel-coloured hour and minute hands, red second hand, tips with Super-LumiNova® detail, four double indices. Anti-reflective mineral glass on both sides. Black calfskin strap. Water-resistant to 10 ATM. Diameter 40 mm. Ronda 513 quartz movement.

**B66954177**



### MEN'S TRUCKS WRISTWATCH

Stainless steel case with crown protection. Black dial with partially red digits. Hands with Super-LumiNova® detail. Hardened mineral crystal. Black silicone strap. Water-resistant to 10 ATM. Diameter 42 mm. Quartz movement.

**B67871195**

# TIMELESS DESIGNS.



## WOMEN'S BUSINESS WATCH

Black/silver. Stainless steel case. Black dial with steel-coloured hour markers. Mineral crystal. Stainless steel watch strap with high-grade folding clasp. Date feature. Water-resistant to 5 ATM. Approximately 32.5 mm in diameter. Ronda 785 quartz movement. Swiss made.

**B66955798**



## MEN'S BUSINESS AUTOMATIC CHRONOGRAPH WATCH

Silver-coloured/black. Stainless steel case. Black dial in 3D look and with illuminated hour markers. Sapphire crystal. Stainless steel watch strap with high-grade folding clasp. With date display and luminous hands. Water-resistant to 5 ATM. Approximately 42.5 mm in diameter. Sellita SW 500 automatic chronograph movement with stopwatch function. Swiss made.

**B66956017**





#### CRYSTAL BRACELET

Rosé gold/black. Stainless steel/glass.  
Rounded off with a Swarovski® crystal.  
Made for Mercedes-Benz by Swarovski®.

Length approx. 15.7 cm      **B66953584**  
Length approx. 16.7 cm      **B66953956**



#### TOKYO BRACELET

Glass/stainless steel. Made for Mercedes-Benz by Swarovski®.  
Length approx. 41.5 cm.

Black/silver-coloured      **B66954718**  
Red/silver-coloured      **B66954719**



#### CRYSTAL RING

Rose gold-coloured/black. Stainless steel/  
glass. Swarovski® crystals. Made for  
Mercedes-Benz by Swarovski®. Size can be  
adapted by the jeweller.

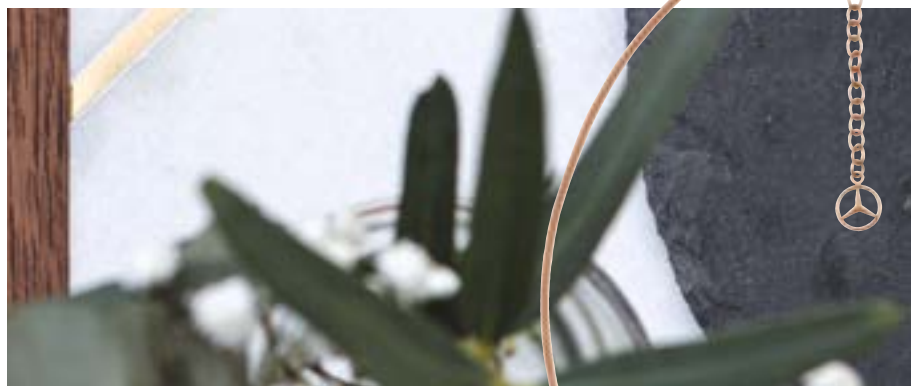
**B66953601**



#### BUSINESS CUFFLINKS

Silver-coloured/black. Stainless steel. Developed in collaboration  
with the Mercedes-Benz Design department. Mercedes star on rear.  
Length approx. 1.5 cm.

**B66954778**



#### CRYSTAL NECKLACE

Rose gold-coloured/black. Stainless steel/  
glass. Key ring with Swarovski® crystal. With  
extension chain. Made for Mercedes-Benz by  
Swarovski®. Length approx. 50 cm.

**B66953578**





THE BEST  
AT ALL  
TIMES.

MERCEDES-BENZ VENU

Garmin Venu

Danish, Dutch, Finnish, English (US), French (FR), Italian, German, Norwegian, Spanish, Swedish, Portuguese (BZL), Portuguese (PT)  
B66959120

Garmin Venu E. Europe

English (US), Russian, Czech, Hungarian, Polish, Slovak, Hebrew, Estonian, Latvian, Lithuanian, Ukrainian  
B66959121

Garmin Venu S. Europe

English (US), Greek, Arabic, Turkish, Croatian, Slovenian, Romanian, Bulgarian, Hungarian  
B66959122

Garmin Venu Japan

Japanese, English (US)  
B66959124

Brand	Mercedes-Benz Venu
OS	Garmin OS (proprietary)
Display	AMOLED
Resolution/size	390x390 px, 1.2"
Weight	46.3 g
Battery life	Up to 6 days
Dimensions	30.4 mm in diameter
Waterproof rating	5 ATM
Pay	Garmin Pay
Display material	Corning® Gorilla® Glass 3
Compatibility	Android/iOS
Trackers/sensors	Distance, heart rate zones, calorie consumption, pulse, sleep duration, sleep phases/quality, steps, stress levels
Strap	20 mm
Storage space	4 GB up to 500 titles
Bluetooth standard	4.2
Sports	Running, cycling, swimming, hiking, golf
Customising	Strap+watch face
Charging via	USB
Material	Plastic, aluminium



#### MEN'S BUSINESS SUNGLASSES

Black spring steel frame. Nose pads and temples with TPE ends. Grey lenses by Carl Zeiss Vision. 100% UV-A/UV-B/UV-C protection (UV-400). Filter category 3. Made for Mercedes-Benz by ic! berlin.

**B66955819**



#### WOMEN'S CASUAL SUNGLASSES

Blue/silver-coloured. Acetate frame with stainless steel temples. Grey-graded lenses by Carl Zeiss Vision. 100% UV-A/UV-B protection (UV-400). Filter category 3. Inset Mercedes star at the end of the temples.

**B66955788**



#### MODERN CASUAL MEN'S SUNGLASSES

Blue acetate frame with gun metal stainless steel temples. Grey lenses by Carl Zeiss Vision. 100% UV-A/UV-B protection (UV-400). Filter category 3.

**B66955787**



#### MEN'S DRIVERS' SUNGLASSES

Black/red. Orange-tinted driving lenses by Carl Zeiss Vision. 100% UV-A/UV-B protection (UV-400). Filter category 2.

**B67871283**

## FOR EVERY BUDGET.



### I-CLIP THE WALLET

Black. Permanently elastic, high-tech plastic ROBUTENSE/cowhide. Patented card system. For up to 12 cards. Money clip. Made for Mercedes-Benz by I-CLIP the wallet. Made in Germany. Dimensions approx. 8.7x6x1.6 cm.

**B66954769**



### WALLET

Black. Cowhide. RFID protection. Various note, coin, card compartments and pockets. Mercedes star embossing. Dimensions approx. 10x2x12 cm.

**B66953717**



### CREDIT CARD HOLDER

Black. Cowhide. Various compartments. RFID protection. Mercedes star embossing. Dimensions approx. 12x2x9 cm.

**B66953719**



### MINI PURSE

Black. Leather. RFID protection. Various note, coin, card compartments and pockets. With embossed Mercedes star. Dimensions approx. 10.5x2x7 cm.

**B66953718**





#### CREDIT CARD HOLDER WITH MONEY CLIP

Black. Calfskin. RFID protection. Eight credit card slots. Mercedes star stud. Dimensions approx. 11 x 1 x 9 cm.

**B66953959**



#### WALLET

Black. Calfskin. RFID protection. Various compartments for notes, coins and cards. Mercedes star stud. Dimensions approx. 12.5 x 2 x 10 cm.

**B66953960**



#### KEY CASE

Black. Italian calfskin. Two leather straps with one large and one small split ring. With zipped compartment for small change on back. Dimensions approx. 11 x 2 x 7 cm.

**B66952883**



#### MINI CREDIT CARD HOLDER

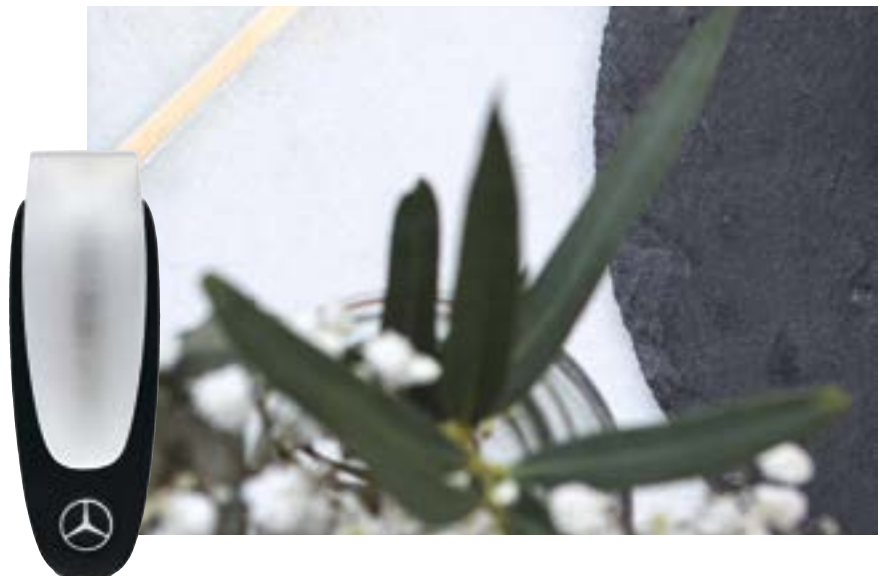
Black. Italian calfskin. 3 slots for approx. 6 cards. Dimensions approx. 10 x 0.6 x 7.5 cm.

**B66951619**

#### MONEY CLIP, BUSINESS

Silver-coloured/black. Stainless steel. Developed in collaboration with the Mercedes-Benz Design team. Length approx. 4.5 cm.

**B66954779**





#### HANDBAG

Black. 100% cowhide. Lining 100% polyester. Various compartments inside, incl. laptop compartment. Carrying handle. Magnet locking system. Dimensions approx. 35 x 15 x 27 cm.

**B66956088**



#### MEN'S ACTROS BELT

Black. Cowhide. Can be shortened. All-round embossed Actros lettering. Length approx. 140 cm. Width approx. 4 cm.

**B67871635**



#### MEN'S BUSINESS BELT

Black. Italian calfskin. Adjustable fit. Length approx. 125 cm, width approx. 3.4 cm.

**B66953047**



#### LADIES' PURSE

Black. Outer material 100% cowhide, inner lining 100% polyester. Various compartments for notes, coins and cards. Metal zipper. Dimensions approx. 19 x 2.5 x 10 cm.

**B66956089**



#### LADIES' PURSE

Greige. Cowhide. All-round metal zipper. Various compartments for notes, coins and cards. Dimensions approx. 11 x 11 cm.

**B66955035**



#### SHOPPER

Polyester. Genuine leather detail. Large main compartment and various inner compartments. Removable cosmetics bag. Mercedes-Benz identity pattern quilting. Dimensions approx. 51 x 22 x 34 cm.

Coral **B66954704**  
Nebulus Blue **B66954787**



#### LADIES' RUCKSACK

Greige. Cowhide. Large main compartment with inside pocket. Drawcord and additional toggle catch. Adjustable shoulder straps. Mercedes-Benz embossing on the inside pocket, Mercedes star stud on cord stopper. Dimensions approx. 28 x 14.5 x 32 cm.

**B66955034**



#### SHOPPING BAG

Grey. 100% polyester felt. Carrying handles in seat belt material. Zipped inner pocket with snap hook. Dimensions approx. 26 x 14 x 40 cm.

**B66952989**

# MY LIFESTYLE: STREET STYLE.

## CAP

Anthracite. Polyester. Water-repellent outer material, perforated Mercedes star. Adjustable fit.

B66954291



## GOLF CAP

Dark blue. Outer material front 96% polyester/4% elastane, outer material sides and back panels 100% polyester. Embroidered Mercedes star. Made for Mercedes-Benz by PUMA. Adjustable fit.

B66450412



## GOLF CAP

Green. 97% polyester/3% elastane. Embroidered Mercedes star. Made for Mercedes-Benz by PUMA. Adjustable fit.

B66450413





#### FLAT BRIM CAP

Black. Underside of brim in silver grey. 80% polyacrylic/20% wool. 6-panel. Adjustable fit.

**B66953170**



#### CAP

Black. 100% cotton. Peached outer material. Adjustable fit.

**B66954533**



#### CAP

Black. 100% cotton. Adjustable fit.

**B66954531**



#### CAP

Black. Cotton/polyester mesh. Actros radiator grille print and Mercedes star embroidered on front section, Actros embroidered on back section. Adjustable fit.

**B67871301**



#### CAP

Black. 100% cotton. Adjustable fit.

**B67871649**



#### CAP

Black. 100% polyester. duoCELL technology. Mesh inserts on the sides. Adjustable fit. Made for Mercedes-Benz by PUMA.

**B66959043**



#### KNITTED HAT

Black/white. 100% polyacrylic. With turnover fold. Actros lettering.

**B67871437**



## KEY PIECES BY MERCEDES-BENZ.

### PRAGUE KEYCHAIN

Stainless steel/mother-of-pearl/PVD coated. Link chain. Key ring with special, easy-to-open lock. Three additional mini split rings for quick removal/replacement of individual keys. Length approx. 10 cm.

Silver-coloured **B66956178**

Rosé-gold-coloured **B66953744**



### ST. TROPEZ KEYCHAIN

Stainless steel. Background finished with Swarovski® Crystal Fine Rocks. Flat split ring with three additional mini split rings for quick removal/replacement of individual keys. Length approx. 9 cm.

Silver-coloured/black **B66952740**  
Silver-coloured/white **B66959998**



### CRYSTAL KEY RING

Rose gold-coloured/black. Stainless steel/glass. Flat split ring with three additional mini split rings for quick removal/replacement of individual keys. Key ring with black Swarovski® Crystal Fine Rocks. Made for Mercedes-Benz by Swarovski®. Length approx. 8 cm.

**B66953577**



### TOKYO KEYRING

Stainless steel. Adorned with Swarovski® crystals. Flat split ring with three additional mini split rings for quick removal/replacement of individual keys. Made for Mercedes-Benz by Swarovski®. Length approx. 9 cm.

Black/silver-coloured **B66954716**  
Red/silver-coloured **B66954717**



#### BILBAO KEY RING

Black/silver. Leather/stainless steel. Flat split ring with three additional mini split rings for quick removal/replacement of individual keys. Length approx. 12 cm.

**B66953823**



#### KEYRING WITH LIGHT

Silver/black/blue. Stainless steel/plastic. "Coming Home" function. Key ring with special, easy-to-open lock. Three additional mini split rings for quick removal/replacement of individual keys. Length approx. 9 cm.

**B66953963**



#### LAS VEGAS KEY RING

Silver-coloured/black. Stainless steel. Luminous finish in the inner contours. Flat split ring with three mini split rings for quick removal/replacement of individual keys. Length approx. 9 cm.

**B66958326**



#### UNTERTÜRKHEIM KEY RING

Black/silver-coloured. Stainless steel. Flat split ring with three mini split rings for quick removal/replacement of individual keys. Made in Germany. Length approx. 7 cm.

**B66953307**



### MERCEDES-BENZ KEY RING

Silver. Stainless steel/cowhide. Flat split ring with three mini split rings for quick removal and replacement of individual keys. Length approx. 9 cm.

**B66955213**



### BRUSSELS KEYCHAIN

Die-cast zinc with high-sheen polished finish. Rotating Mercedes star. Split ring with three additional mini split rings for quick removal/replacement of individual keys. Length approx. 9 cm.

Gold-coloured **B66953741**  
Silver **B66957516**



### TRUCKS KEY RING BOTTLE OPENER

Silver-coloured/red. With red Actros silhouette. Stainless steel. Bottle opener function. Large split ring with three mini split rings. Actros logo lettering on the bottle opener, Mercedes-Benz lettering on the split ring. Length approx. 11 cm.

**B66955045**





#### KEY CASE

Leather/stainless steel. Magnetic fastener. Snap hook with three additional mini split rings for quick removal/replacement of individual keys. Dimensions approx. 4.6x2.3x8.4 cm.

Black	<b>B66958408</b>
Red	<b>B66958410</b>
Carbon-fibre look leather	<b>B66958411</b>



#### KEY CASE

Leather/stainless steel. Magnetic fastener. Flat split ring with three additional mini split rings for quick removal/replacement of individual keys. Size approx. 4.1x2.1x8.3 cm.

Black	<b>B66958404</b>
White	<b>B66958405</b>
Red	<b>B66958406</b>
Carbon-fibre look leather	<b>B66958407</b>



#### KEY FOBBS

Silver-coloured/black. Stainless steel. Flat split ring with three additional mini split rings for quick removal/replacement of individual keys. Front features replica of original lettering on rear of vehicle, back features 3D star logo. Designed in Germany. Length approx. 9 cm.

Model type A-Class	<b>B66958414</b>
Model type B-Class	<b>B66958415</b>
Model type C-Class	<b>B66958416</b>
Model type E-Class	<b>B66958417</b>
Model type G-Class	<b>B66958418</b>
Model type S-Class	<b>B66958419</b>
Model type V-Class	<b>B66958420</b>
Model type SL	<b>B66958421</b>
Model type CLA	<b>B66958422</b>
Model type CLS	<b>B66958423</b>
Model type GLA	<b>B66958424</b>
Model type GLC	<b>B66958425</b>
Model type GLE	<b>B66958426</b>
Model type GLS	<b>B66958427</b>
Model type GLB	<b>B66953742</b>
Model type EQC	<b>B66953962</b>

—  
UNLOCK NEW  
STYLES.  
—



#### KEY SLEEVE

Leather. Aperture for Mercedes star. Embossed Mercedes-Benz lettering. Dimensions approx. 4.6x1.9x8 cm.

Black	<b>B66958412</b>
-------	------------------



#### TRUCKS PIN

Stainless steel. Design modelled like the shape of the Actros radiator grille. Raised Mercedes star. Classic pin as a clasp. Length approx. 2.5 cm, width approx. 1.5 cm.

**B67872186**



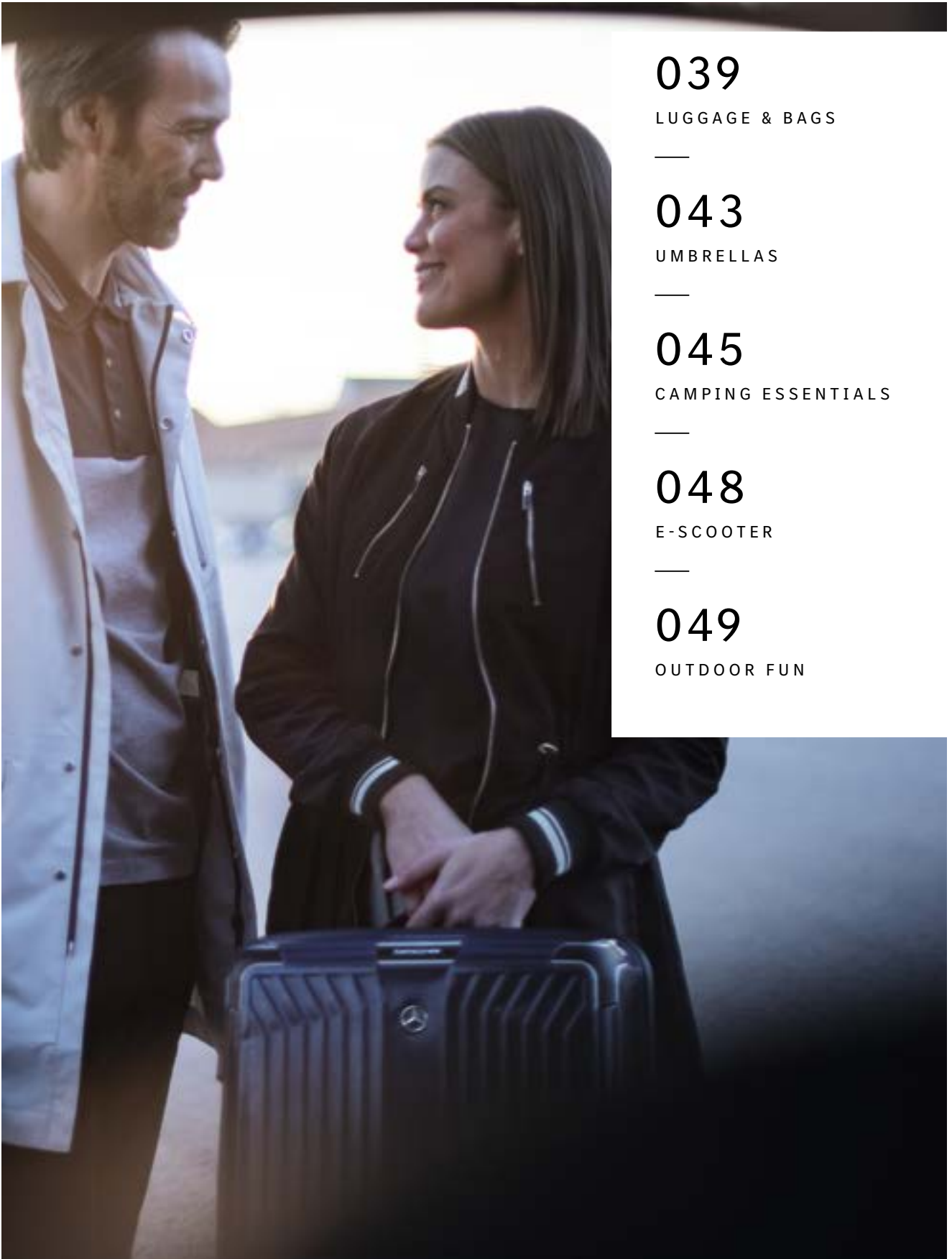
#### BADGE, MERCEDES STAR

Polished stainless steel. Butterfly clasp and anti-twist lock on back. Diameter approx. 1 cm.

**B66953080**

One click on the desired sub-chapter will take you directly to the respective page.

# TRAVEL & OUTDOOR



039

LUGGAGE & BAGS

043

UMBRELLAS

045

CAMPING ESSENTIALS

048

E-SCOOTER

049

OUTDOOR FUN

# FOR VERY IMPORTANT PASSENGERS.



## BUSINESS RUCKSACK

Black. Outer material 100% nubuck leather, inner lining 100% polyester. Large main compartment. Various inside and side compartments. Breathable mesh back with car seat quilting and trolley connection function. Adjustable carrying straps. Mercedes-Benz embossing on the front and rear, Mercedes star pattern on lining. Dimensions approx. 29 x 15 x 44 cm.

**B66956090**



## WEEKEND BAG

Black. Polyurethane/polyester. Water-repellent. Large main compartment with 2-way zip. Zipped inner pocket. Adjustable, detachable shoulder belt. Dimensions approx. 60 x 30 x 34 cm. Capacity approx. 60 l.

**B66955033**



## RUCKSACK

Black. Polyurethane/polyester. Water-repellent. Main compartment with 2-way zipper and various inner compartments. Zipped compartment on front. Padded back section. Trolley attaching function. Adjustable, padded shoulder belt. Carrying handle. Dimensions approx. 30 x 13 x 43 cm.

**B66955032**



### TRAVEL BAG

Black/grey/cyan blue. Outer material and lining polyester, handle polyurethane. Large main compartment, various inner and side compartments. Adjustable shoulder strap. Dimensions approx. 52x20x27 cm. Capacity approx. 30 l.

**B66956021**



### ACTROS HOLDALL

Black. Polyester. Large inside compartment, shoe compartment on the side and inside pocket. 2-way zipper. Adjustable shoulder strap with anti-slip padding. Dimensions approx. 65x32.5x35 cm. Capacity approx. 73 l.

**B67871669**



### WASH BAG

Polyester. With hanger accessory. Various pouches and mesh pockets. Removable mirror. Clip fastener. Dimensions approx. 50x30 cm.

Black/red **B67871198**

Black/beige **B67871199**



### PILOT SUITCASE

Black. Polyester/nylon/polyurethane. Large main compartment with padded laptop compartment for laptops up to approx. 43.9 cm (17.3 inches), tablet compartment and separate compartment with packing straps for clothing or documents. Zipped outside pocket and practical partitioning. Two robust double rollers. Cabin-ready dimensions. Made for Mercedes-Benz by Samsonite. Dimensions approx. 48x22x40 cm. Capacity approx. 32 l. Weighs approx. 3 kg.

**B66958845**



### LAPTOP BAG

Black. Polyester/nylon/polyurethane. Large main compartment with removable laptop compartment for laptops up to approx. 40.6 cm (16 inches). Expandable front compartment with tablet compartment and space for documents. Outer compartment with practical partitioning. Two carrying handles. Detachable shoulder strap. Smart sleeve for secure transportation on top of suitcase. Made for Mercedes-Benz by Samsonite. Dimensions approx. 45x16/19x33 cm. Capacity approx. 18/21.5 l. Weight: approx. 1.1 kg.

**B66958844**

### WASH BAG

Black. Polyester/nylon/polyurethane. Main compartment with various internal pockets. Small zipped outer compartment. Hook for hanging. Made for Mercedes-Benz by Samsonite. Dimensions approx. 25x11x23 cm. Capacity approx. 6 l. Weight: approx. 0.3 kg.

**B66958846**





**X'BLADE SPINNER 71 SUITCASE**

Black. Polyester/nylon/polyurethane. Large main compartment with compression packing belt. Two zipped outer compartments. Large mesh pocket with chest fastening as well as wet pocket on the inside of the lid. TSA lock. Double rollers. With additional bag. Made for Mercedes-Benz by Samsonite. Dimensions approx. 45x29/34x71 cm. Capacity approx. 88 l/95 l. Weight: approx. 3.4 kg.  
**B66958843**



**X'BLADE SPINNER 63 SUITCASE**

Black. Polyester/nylon/polyurethane. Large main compartment with compression packing belt. Two zipped outer compartments. Large mesh pocket with chest fastening as well as wet pocket on the inside of the lid. TSA lock. Double rollers. With additional bag. Made for Mercedes-Benz by Samsonite. Dimensions approx. 42x27/31x63 cm. Capacity approx. 66 l/72 l. Weight: approx. 2.8 kg.  
**B66958842**



**X'BLADE SPINNER 55 SUITCASE**

Black. Polyester/nylon/polyurethane. Large main compartment with compression packing belt. Three zipped outer compartments. Wet pocket on the inside of the lid. TSA lock. Double rollers. With additional bag. Cabin-ready dimensions. Made for Mercedes-Benz by Samsonite. Dimensions approx. 40x20x55 cm. Capacity approx. 41 l. Weight: approx. 2.5 kg.  
**B66958841**



**SPINNER 75 LITE-BOX SUITCASE**

Barrel in Mercedes-Benz paintwork colour. Highly impact-resistant material (Curv®). Functional interior equipment with adjustable packing straps and two dividers. Smooth, silent double wheels. TSA lock. Incl. shoe bag and laundry bag. Made for Mercedes-Benz by Samsonite. Dimensions approx. 50x29x75 cm, volume approx. 97 l, weight approx. 3 kg.  
Denim blue    **B66958485**  
Hyacinth red    **B66958491**  
Black    **B66958488**



**SPINNER 69 LITE-BOX SUITCASE**

Barrel in Mercedes-Benz paintwork colour. Highly impact-resistant material (Curv®). Functional interior equipment with adjustable packing straps and two dividers. Smooth, silent double wheels. TSA lock. Incl. shoe bag and laundry bag. Made for Mercedes-Benz by Samsonite. Dimensions approx. 46x27x69 cm, volume approx. 75 l, weight approx. 2.7 kg.  
Hyacinth red    **B66958490**  
Denim blue    **B66958484**  
Black    **B66958487**



**SPINNER 55 LITE-BOX SUITCASE**

Black. Highly impact-resistant material (Curv®). Functional interior equipment with adjustable packing straps and two dividers. Smooth, silent double wheels. TSA lock. Incl. shoe bag and laundry bag. Made for Mercedes-Benz by Samsonite. Dimensions approx. 40x20x55 cm. Capacity approx. 38 l. Weight: approx. 2.2 kg.  
Black    **B66958486**  
Denim blue    **B66958483**  
Hyacinth red    **B66958489**



### RUCKSACK, SMALL

Black/blue. Polyester. Water-repellent. Large main compartment. Separate compartment for cooling block. Small extra pocket on the front. Net pocket on the outside for drinks bottle. Transparent pane for identity card. Padded, adjustable shoulder belt. Chest strap. Illuminated Mercedes-Benz robots. Embroidered Mercedes star on front. Lining with Mercedes-Benz identity pattern. Made for Mercedes-Benz by Lässig. Dimensions approx. 24.5x15.5x27 cm.

Black/blue	<b>B66955769</b>
Black/pink	<b>B66955770</b>



### RUCKSACK, LARGE

Black/blue. Polyester. Water-repellent. Insulated front pouch. Two small zipped compartments. Transparent field for identity card. Padded shoulder straps. Illuminated Mercedes-Benz robots. Embroidered Mercedes star on front. Lining with Mercedes-Benz identity pattern. Made for Mercedes-Benz by Lässig. Dimensions approx. 32x18x42 cm.

Black/blue	<b>B66955767</b>
Black/pink	<b>B66955768</b>



### TROLLEY

Black/blue. Polyester. Water-repellent. Functional interior equipment with packing straps. Various outside pockets. With practical shoe bag. Adjustable grip. Transparent field for identity card. Illuminated Mercedes-Benz robots. Embroidered Mercedes star on front. Lining and shoe bag with Mercedes-Benz identity pattern. Made for Mercedes-Benz by Lässig. Dimensions approx. 29.5x19.5x46 cm.

Black/blue	<b>B66955202</b>
Black/pink	<b>B66955201</b>



### NECK POUCH

Black/blue. Polyester. Illuminated Mercedes-Benz robots. Key ring. Transparent pane at the rear. Cord with child-protection mechanism. Embroidered Mercedes star on front. Lining with Mercedes-Benz identity pattern. Made for Mercedes-Benz by Lässig. Dimensions approx. 12x0.5x13 cm.

Black/blue	<b>B66954038</b>
Black/pink	<b>B66954039</b>

FOR A DRY  
WAY HOME.



#### GOLF UMBRELLA

Black. Fibre-glass/plastic/polyester. Opened manually. Safety runner. Windproof design. Special water- and dirt-repellent coating. Matching cover. When open approx. 130 cm in diameter, length when closed approx. 100 cm.

**B66958963**



#### **GUEST UMBRELLA**

Black. Aluminium/polyester. Water-repellent and dirt-repellent. Automatic opening. Windproof design. Set of 8. Nickel tips. With matching cover. When open approx. 130 cm in diameter, length when closed approx. 100 cm.

**B66958962**



#### **COMPACT UMBRELLA**

Black. Steel/polyester. Plastic handle with iconic design. Set of 8. Automatic opening and closing. Wrist loop. Matching cover. Windproof design. Special water and dirt-repellent coating. 4C heat print logo print. When open, approx. 97 cm in diameter; length when closed, approx. 34 cm.

**B66958961**



#### **UMBRELLA**

Transparent/black. Aluminium/polyethylene. Plastic round hook handle in iconic design. Set of 8. Automatic opening. Windproof design. When open approx. 105 cm in diameter, length when closed approx. 86 cm.

**B66958959**



#### **UMBRELLA**

Black. Aluminium/polyester. Plastic round hook handle in iconic design. Set of 8. Automatic opening. Windproof design. Special water and dirt-repellent coating. 4C heat print logo print. When open, approx. 105 cm in diameter; length when closed, approx. 86 cm.

**B66958960**



#### TO GO TEA MUG

Black. Stainless steel. Double-walled. Functional drinking cap with brewing unit. Silicone wrist strap with raised, embossed Mercedes-Benz lettering. Laser-engraved Mercedes star. Made for Mercedes-Benz by eva solo. Diameter approx. 7.5 cm, height approx. 17.5 cm. Capacity approx. 0.35 l.

**B66955083**

#### TO GO CUP

Silver-coloured/black. Stainless steel. Double-walled. Functional drinking cap. Silicone wrist strap with raised, embossed Mercedes-Benz lettering. Laser-engraved Mercedes star. Made for Mercedes-Benz by eva solo.

Capacity approx. 0.35 l **B66955013**

Capacity approx. 0.5 l **B66955014**



#### MOBILITY THERMAL FLASK

Silver-coloured/black. Stainless steel. Double-walled. Keeps drinks cool for up to 24 hours and hot for up to 12 hours. 100% sealed. With insulated drinking cup. Made for Mercedes-Benz by emsa. Diameter approx. 8 cm, height approx. 30 cm. Capacity approx. 1.0 l.

**B67872866**



#### SENATOR THERMAL FLASK

Silver-coloured/dark brown. Stainless steel. Real leather gaiter. Double-walled. Keeps drinks cool for up to 24 hours and hot for up to 12 hours. 100% sealed. With integrated drinking cup. Made for Mercedes-Benz by emsa. Diameter approx. 9 cm. Height approx. 30 cm. Capacity approx. 1.0 l.

**B66045701**



#### THERMAL CUP

Silver-coloured/black. Stainless steel. Double-walled. Keeps drinks cool for up to 8 h and hot for up to 4 h. Pushbutton opening. Drinking opening all points around 360 degrees. 100% sealed. Detachable sealing cap. Dish-washer-safe. Made for Mercedes-Benz by emsa.

Capacity approx. 0.36 l **B67872874**

Capacity approx. 0.5 l **B67872875**



#### MOBILITY THERMAL FOOD CONTAINER

Silver-coloured/black. Stainless steel. Double-walled. Keeps drinks cool for up to 12 h and hot for up to 6 h. 100% sealed. With integrated food compartment. Easy to clean. Made for Mercedes-Benz by emsa. Dimensions approx. 17 x 15 x 17.3 cm. Capacity approx. 1.2 l.

**B67872867**







#### MULTIFUNCTIONAL TOOL, SWISSTOOL X

Silver. Stainless steel. 28 tools. Star logo etched on handle. Black leather pouch with belt loop. Made for Mercedes-Benz by Victorinox. Swiss made. Size with pouch approx. 4 x 12 x 3.5 cm.

**B66953417**



#### PENKNIFE, CLIMBER

Black. Stainless steel/plastic. Large and small blade, scissors, multipurpose hook, bottle opener, can opener, reamer, punch and sewing awl, corkscrew, ring and tweezers. Made for Mercedes-Benz by Victorinox. Length approx. 9.1 cm.

**B66953409**



#### PENKNIFE, SWISS CHAMP

Black. Stainless steel/plastic. Officer's knife with 33 tools. Made for Mercedes-Benz by Victorinox. Length approx. 9.1 cm. Weighs approx. 185 g.

**B66953410**



#### MYFLAVOUR DRINKING BOTTLE

Transparent/silver. Tritan. Skewer for fruits. Practical carrying loop. Dishwasher-safe. Laser-engraved Mercedes star. Made for Mercedes-Benz by eva solo. Diameter approx. 7.5 cm, height approx. 25.5 cm. Capacity approx. 0.75 l.

**B66955015**

# READY TO GO.



#### LIGHTER

Black. Brass. Made for Mercedes-Benz by Zippo®. Made in USA. Dimensions approx. 3.9 x 1.5 x 5.8 cm.

**B66953357**

#### CIGARETTE LIGHTER, ACTROS

Silver. Matt chrome brass. Stylised, laser-engraved ACTROS front. Made for Mercedes-Benz by Zippo®. Made in USA. Dimensions approx. 4 x 6 x 1.5 cm.

**B67872020**



#### LED TORCH, LARGE

Black. Aluminium. 260 lumen. Run-time of approx. 50 hours. Beam range of up to 160 m. Focus control. Length approx. 32 cm.

**B66953317**



#### LED TORCH, SMALL

Black. Aluminium. 80 lumen. Run-time of approx. 10 hours. Beam range of up to 150 m. Length approx. 16 cm.

**B66953318**



#### FOLDING CHAIR

Black. Steel tube frame. Armrests with integrated drinks holder. Up to 160 kg. Embroidered Mercedes star on the front, embroidered Mercedes-Benz lettering on the rear. Made for Mercedes-Benz by BRUNNER. Dimensions when packed approx. 17 x 97 cm, dimensions when assembled approx. 90 x 60 x 50/90 cm, weight approx. 4.5 kg.

**B66958979**

THE CITY  
IS YOURS.



### E-SCOOTER

Black. Designed for the last mile. Foot folding mechanism. Folding handlebar. Height adjustable using telescopic drag link. Twist-grip accelerator. Rear drum brake. Front and rear suspension. Display. Micro app support. Front and rear lighting complies with road traffic requirements. Licence plate mount. StVO approval for Germany. 500-watt motor. Maximum speed approx. 20 km/h. Range approx. 25 km. Weight approx. 11 kg. Size approx. 105 x 52 x 108.5 cm. Made for Mercedes-Benz by micro.

B66450199

Road legal	Yes
Tyre diameter	10 inches
Battery capacity	7800 mAh
Wattage	500 W
Range	25 km
vMax	20 km/h
Weight approx.	13.5 kg
Charge time	2.1 h (70%)/3.5 h (100%)

TIME OFF.  
FUN ON.



#### SCOOTER

Black. Aluminium. Fully collapsible. Rubber-coated, folding handles. Suspension fork. Handlebars adjustable in height. 200 mm rollers with ABEC 9 ball bearings. Foot brake. Kick stand. Age 14+. Maximum load approx. 100 kg. Weight approx. 6.5 kg. Dimensions when folded approx. 86x35x12 cm. Foot length on running board approx. 34 cm.

**B66955043**





#### HANDPRESSO AUTO CAPSULE ESPRESSO MACHINE

Black. Aluminium/plastic. Mobile espresso machine for the car, motor caravan or truck. Compatible with Nespresso® capsules. Coffee preparation in approx. 2 minutes 30 seconds. Fits in a cup holder. Digital monitoring screen. Anti-spraying nozzles. 12/24 V connection. Pressure approx. 19 bar. Power output approx. 120 watts. Water capacity approx. 50 ml. Weighs approx. 880 g. Dimensions approx. 24.5 x 7.5 x 7.5 cm.

**B67872174**



#### BEACH UMBRELLA

Black/beige. 100% polyester. Fibreglass rails and lockable fibreglass lower shaft. Waterproof. Windproof design. Opened manually. Space-saving travel size. Diameter approx. 147 cm. Length when closed approx. 71 cm.

**B66954748**



#### SHOWER/BEACH TOWEL

Black. 100% cotton. Tonal Mercedes star woven into the design. Made for Mercedes-Benz by möve. Made in Germany. Size approx. 80 x 180 cm.

**B66953607**



#### GRILL BRANDING IRON

Silver. Stainless steel/beechwood. Mercedes star logo as branding image. Mercedes-Benz lettering burned into the wooden handle. Grip length approx. 40 cm. Diameter of branding image approx. 10 cm.

**B66954736**



#### PICNIC BLANKET

Khaki/sand beige. Upper side made from soft polyester fleece, bottom made from water-repellent polyamide fabric. Pull strap with size-adjustable strap and carrying handle. Storage bag with logo print. Made for Mercedes-Benz by FRAAS.

**B66954747**



#### BEACH TOWEL

Beige. 100% cotton. All-over print. Dimensions approx. 75 x 150 cm.

**B67871282**



One click on the desired sub-chapter will take you directly to the respective page.

# WORK & LIVING

052

HOME ACCESSORIES

---

053

CANINE ACCESSORIES

---

054

OFFICE & STATIONERY

---

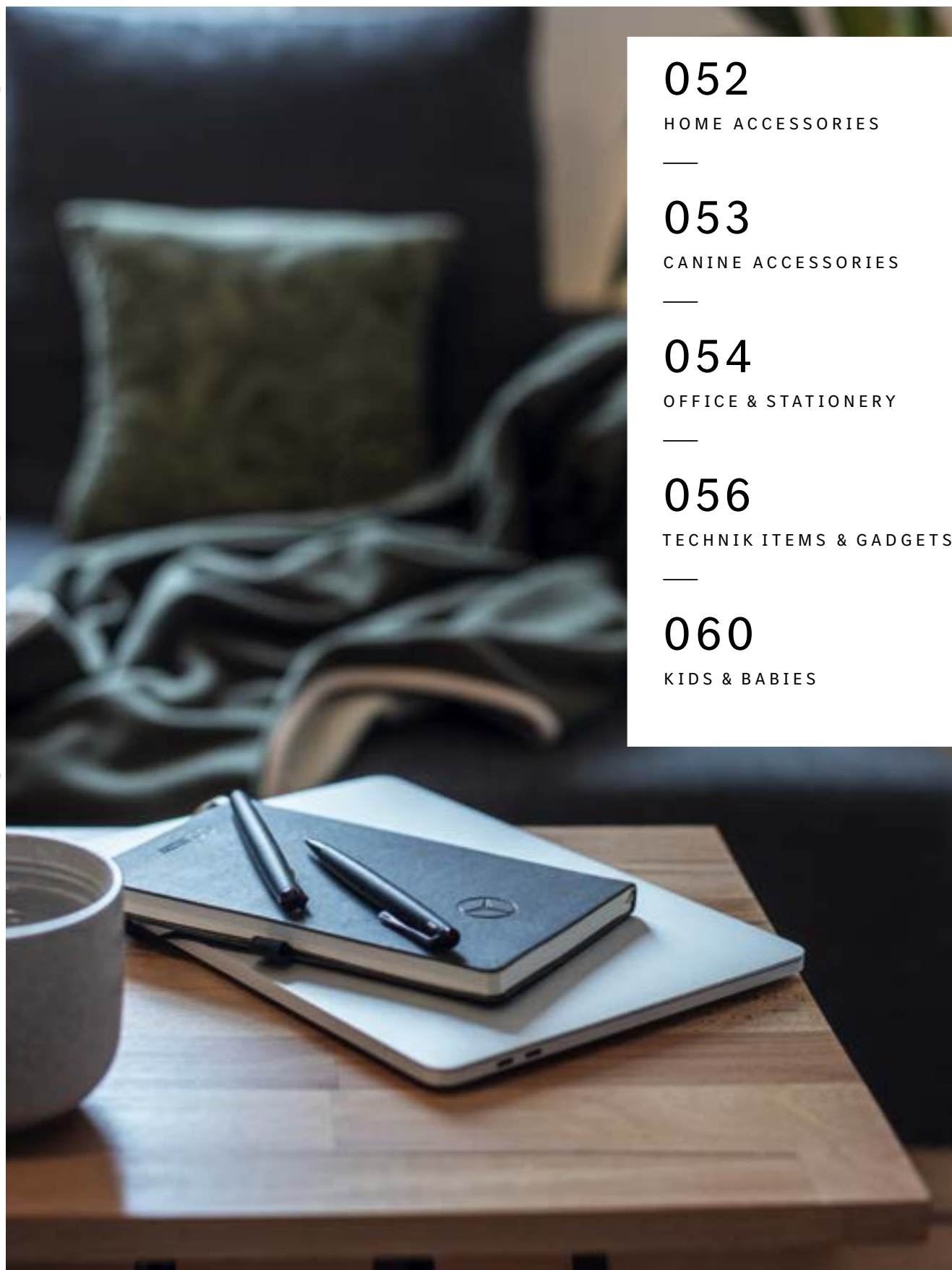
056

TECHNIK ITEMS & GADGETS

---

060

KIDS & BABIES





#### WALL CLOCK

Silver-coloured. Aluminium dial and case. Black numerals. Quartz movement. Thermometer and hygrometer function. Diameter approx. 30 cm.

**B67870476**



#### FLEECE CUSHION

Khaki/beige. Polyester. Hotel fold with piping on the rear. Includes filling. Made for Mercedes-Benz by FRAAS. Dimensions approx. 40x40x10 cm.

**B66958973**



#### REVERSIBLE FLEECE BLANKET

Khaki/sand beige. 100% polyester. Embossed Mercedes star on the front, rear with embossed topography pattern. Polyester jersey border all round. Made for Mercedes-Benz by FRAAS. Size approx. 150x200 cm.

**B66958972**



#### REVERSIBLE FLEECE BLANKET

Black/anthracite. 100% polyester. Surrounding border. Size approx. 150x200 cm.

**B67872010**



#### DOG LEASH, BY MIACARA®

Grey. Saffiano leather. Adjustable to two lengths with snap hook. Mercedes star stitching on lower end. Made in Italy. Made for Mercedes-Benz by MiaCara®. Total length approx. 1.95 m.

**B66958836**



#### DOG COLLAR, BY MIACARA®

Grey. Leather/stainless steel. Buckle. Made in Italy. Made for Mercedes-Benz by MiaCara®. Sizes S-L.

**B66958833-8835**



#### DOG BAG, BY MIACARA®

Anthracite/black. Outer fabric 100% olefin, inner fabric 100% polyester. Sturdy wooden base. Loop on the inside of the bag. Washable as delicate up to 30 °C. Made for Mercedes-Benz by MiaCara®. Access height approx. 17 cm. Dimensions approx. 45 x 25 x 36 cm.

**B66955790**



#### DOG CUSHION, BY MIACARA®

Grey. Polyester/polyurethane. Cover can be removed and washed. Made for Mercedes-Benz by MiaCara®. Sizes S-L.

**B66958838**

**B66958839**

**B66958840**



#### DOG SNACK POUCH, BY MIACARA®

Grey. Canvas/Saffiano leather. Upper compartment for dog treats can be closed with drawstring. Lower compartment for polybags. Made in Italy. Made for Mercedes-Benz by MiaCara®. Dimensions approx. 12 x 5 x 15 cm.

**B66958837**



YOURS  
SINCERELY.

#### LAMY STUDIO FOUNTAIN PEN

Black. Stainless steel. Writes in blue. Refillable. Shiny black Mercedes-Benz lettering on the shaft below the clip. Made for Mercedes-Benz by LAMY.

**B66954774**

#### LAMY STUDIO BALLPOINT PEN

Black. Stainless steel. Writes in black. Twist-action. Refillable. Shiny black Mercedes-Benz lettering on the shaft below the clip. Made for Mercedes-Benz by LAMY.

**B66954773**



#### BALLPOINT PEN, LAMY LOGO

Mountain grey/silver-coloured. Plastic/stainless steel. Push-action. Writes in blue. Takes LAMY M 16 large-capacity refills. Silver-coloured Mercedes-Benz logo print and Citan logo print on shaft. In decorative test tube packaging. Made for Mercedes-Benz by LAMY. Made in Germany.

Citan	<b>B67872041</b>
Vito	<b>B67872040</b>
Sprinter	<b>B67872039</b>



#### LAMY LOGO BALLPOINT

Barrel in Mercedes-Benz paintwork colour. Plastic/stainless steel. Push-action. Writes in blue. Takes LAMY M 16 large-capacity refills. Silver-coloured Mercedes-Benz logo print on barrel. In decorative test tube packaging. By LAMY for Mercedes-Benz. Made in Germany.

Brilliant blue	<b>B66956168</b>
Cosmos black	<b>B66954239</b>



#### LAMY LOGO BALLPOINT PEN

Barrel in Mercedes-Benz paintwork colour. Plastic/stainless steel. Push-action. Writes in black. Takes LAMY M 16 large-capacity refills. Silver-coloured Mercedes-Benz logo print on barrel. In decorative test tube packaging. Made for Mercedes-Benz by LAMY. Made in Germany.

Mountain grey	<b>B66953652</b>
---------------	------------------



#### PAPERWEIGHT

Silver shadow/chrome/black. Die-cast zinc. All-round chromed plastic clasp. Base underside with foam rubber coating. Original radiator grille star from the vehicle. Mercedes-Benz form language designed in Germany. Dimensions approx. 13 x 13 x 13 cm.

**B66954610**



#### CRYSTAL PENCILS, SET-OF-5

Black. Wood/glass. Writes in black. One Swarovski® crystal in either white, blue, green, red or black respectively on the front of the pencil. Made for Mercedes-Benz by Swarovski®. Length approx. 17.5 cm.

**B66954467**



#### CRYSTAL NOTEBOOK

Black/rose gold-coloured. Cowhide/stainless steel/glass. High-quality fastener with Swarovski® Crystal Ultrafine Rocks. Inlay replaceable. Made for Mercedes-Benz by Swarovski®. Dimensions approx. 16.3 x 2.5 x 21.7 cm.

**B66953602**



#### NOTEBOOK

Black/beige. Paper. 192 pages plus 8 pages at the front and rear. 80 g/square metre chamois apple paper, squared with apple logo on the front of each page. Thread sealing. Bag for utensils on rear. Round rear without thermally pressed fold. Pen loop. Made for Mercedes-Benz by Appel®. DIN A5.

**B66958983**



#### LANYBOOK, SMALL

Black. FSC paper. 192 pages. Thread binding. Grey bookmark. Elastic pen loop. 3D star as Lanybutton, embossed Mercedes-Benz lettering on cover. Dimensions approx. 14 x 2 x 9 cm.

**B66953636**



#### DOCUMENT FOLDER

Polyester/polyurethane. All-round zip fastening. Dimensions approx. 25 x 34 cm.

Black/red **B67872007**  
Black **B67872008**



# JUST IN CASE.



## CASE FOR iPhone® 11 PRO/11 WITH CHAIN

Black. Polycarbonate/microfibre. Length-adjustable cord. Aperture for camera, control buttons and connections. Suitable for wireless charging.

iPhone® 11 Pro	<b>B66955758</b>
iPhone® 11	<b>B66959098</b>



## CASE FOR iPhone® 11 PRO/11 WITH RING

Black with glitter particles/transparent edge. Polycarbonate/TPU/metal. Aperture for camera, control buttons and connections. Bracket can be rotated by 360°. Ring can be folded by 180°.

iPhone® 11 Pro	<b>B66955757</b>
iPhone® 11	<b>B66959097</b>



## CASE FOR iPhone® 11 PRO/11

Black. Polycarbonate/microfibre. Protects the casing against scratches. Aperture for camera, control buttons and connections. Suitable for wireless charging.

iPhone® 11 Pro	<b>B66955759</b>
iPhone® 11	<b>B66959093</b>



## CASE FOR iPhone® XR/X/XS

Black. Polycarbonate/microfibre. Apertures for camera, control buttons and connections. 3D star. Suitable for wireless charging.

iPhone® XR	<b>B66955205</b>
iPhone® X/XS	<b>B66953638</b>



#### COVER FOR IPHONE® 12 PRO/12

Black. Polycarbonate/microfibre. Aperture for camera, control buttons and connections. Suitable for wireless charging. 3D star.

**B66959443**



#### CABLE ORGANISER

Black. 100% nubuck leather. Various loops to store electronic accessories and equipment. With leather straps for closing. Mercedes-Benz embossing. Dimensions approx. 35x15 cm.

**B66956091**



**USB MEMORY STICK,  
GEN. 6, 32 GB, USB 3.0**

Black/silver-coloured. Plastic. In the form of Mercedes-Benz vehicle key Gen 6. 32 GB. USB 3.0 interface. Compatible with all standard operating systems. Dimensions approx. 3 x 1.4 x 6 cm.

**B66954737**



**USB FLASH DRIVE,  
GENERATION 7, 32 GB**

White/chrome. Plastic. Stick in the shape of Mercedes-Benz Gen 7 vehicle key. USB-C connection. High-speed read and write. Compatible with smartphones, tablets and all standard operating systems. With USB-C to USB-A adapter 32 GB.

**B66959114**



**USB-C STICK, G 500,  
32 GB**

designo hyacinth red metallic. DieCast/ plastic. Stick in G-Class W463/2018 vehicle shape. Scale 1:64. Headlights with LED lamps. USB port retractable into housing. USB-C connection. High-speed read and write. With USB-C to USB-A adapter Compatible with smartphones, tablets and all standard operating systems. 32 GB.

**B66959115**



**USB MEMORY STICK,  
GEN. 6, 32 GB, USB 3.0**

White/silver-coloured. Plastic. In the form of Mercedes-Benz vehicle key Gen 6. 32 GB. USB 3.0 interface. Compatible with all standard operating systems. Dimensions approx. 3 x 1.4 x 6 cm.

**B66954738**



**POWERBANK,  
CHARGING STATION**

Black/silver. Plastic. Inductive contact surface. Capacity of 10,000 mAh. Two output USB connections, output DC 5V, 1A. One input micro USB connection, input DC 5V, 1A. Lithium-polymer battery. With on/off switch. Digital display on front. Incl. micro USB cable. Dimensions approx. 14.3 x 7.3 x 1.9 cm.

**B66954804**



**POWERBANK,  
5,000 MAH**

Black/silver-coloured. Plastic. Capacity of 5,000 mAh. Two USB ports. Lithium-polymer battery. On/Off switch. Four LEDs for displaying the charge progress. With micro USB cable. Dimensions approx. 11 x 1.5 x 6.6 cm.

**B66953522**

# ENTERTAINMENT THE MERCEDES WAY.



## MERCEDES-BENZ BLUETOOTH® HEADPHONES

Black/silver. Plastic. One USB port (USB type C). Lithium-ion battery. On/off switch. With charging cable USB type C to type A.

A2238209903

---

Weight	365 g
Battery life	18 h (including NC and BT)
Noise cancelling	Hybrid ANC
Voice control assistant	Integrated
Charge time	2 h
Charging port	USB-C

Stereo jack	3.5 mm
Microphone included	Yes
Bluetooth standard	5.0
Colours	1 (black)
Frequency range	50 Hz-20,000 Hz
Outer material	Piano lacquer

YOU DON'T  
OUTGROW  
MERCEDES.



#### SAFARI CUDDLY MONKEY

Brown. Polyester. Sewn-on T-shirt. Embroidered logo on belly. Made for Mercedes-Benz by NICI. Dimensions approx. 35x19x12 cm.

**B66958971**

#### SAFARI CHILDREN'S CUTLERY

Silver with safari design colour print. Stainless steel. 4-part set comprising children's spoon, children's fork, children's knife and children's teaspoon. Stainless. Dimensionally stable. Resistant to acid. Dishwasher-safe. By WMF for Mercedes-Benz.

**B66958975**





#### SAFARI BLANKIE

Blue. Polyester. Elephant head featuring flapping ear applications and 3D trunk. Can be used as a cushion when folded together. Made for Mercedes-Benz by NICI. Dimensions approx. 100x120 cm.

**B66958968**



#### SAFARI CUDDLY GIRAFFE

Yellow. Polyester. Sewn-on scarf with logo print. Made for Mercedes-Benz by NICI. Dimensions approx. 41x13x28.5 cm.

**B66958970**



#### SAFARI CUDDLY BLANKET

Beige. Polyester. With plastic teething ring. Corner with crackling film. Embroidered animal faces. Made for Mercedes-Benz by NICI. Dimensions approx. 16x16x1 cm.

**B66958967**



#### SAFARI 2-IN-1 PLAY BLANKET

White/green. Polyester. Baby blanket and toy storage in one. All-round loops sewn on. Top and bottom with different print. Machine washable. Made for Mercedes-Benz by NICI. Diameter approx. 140 cm.

**B66958969**



#### SAFARI HOODED TOWEL

Beige. 100% cotton. Lion application from polyester plush on the hood. Machine washable. Made for Mercedes-Benz by NICI. Dimensions approx. 100x100 cm.

**B66958966**



#### CUDDLY BEAR

Beige. Polyester plush. Made for Mercedes-Benz by NICI. Size approx. 35 cm.

**B66041559**

One click on the desired sub-chapter will take you directly to the respective page.

# SPORTS

063

GOLF

067

BIKES

069

RUNNING & FITNESS





### GOLF BALLS, SET OF 3

White. Urethane. TaylorMade TP5 pix.  
5-layer ball structure. Made for  
Mercedes-Benz by TaylorMade.

**B66450465**



### GOLF STAND BAG

Black. 100% polyester. 14 club divisions. Various pockets and pouches. Towel clip. Shoulder carrier with quick-release fastener. EasyFlex base for maximum ground contact. Detachable rain hood. Made for Mercedes-Benz by Cobra. Weight approx. 2.1 kg. Dimensions approx. 34x37x87 cm.

**B66450387**

### GOLF CART BAG

100% polyester. 15 club divisions with external putter compartment. Various pockets and pouches. Towel clip. Adjustable shoulder strap. Removable rain hood. Pass-through for cart strip for secure hold and free access to pockets. Made for Mercedes-Benz by Cobra. Weight approx. 2.1 kg. Dimensions approx. 40x30x92 cm.

White/fuchsia  
Black

**B66450386**

**B66450385**

—  
SEE YOU ON THE  
GOLF COURSE.  
—



#### GOLF SHOE BAG

Black. 100% polyester. Large main compartment with subcompartments. 2-way zipper. Wrist loop. Ventilation holes. Made for Mercedes-Benz by Cobra. Dimensions approx. 25x11x37 cm.

**B66450390**



#### GOLF SPORTS BAG

100% polyester. Split main compartment with 2-way zip. Front pocket. Side pocket with external mesh pouch. Shoe pocket with breather holes. Padded, removable shoulder belt adjustable in length. Made for Mercedes-Benz by Cobra. Dimensions approx. 50x30x27 cm.

**B66450389**



#### GOLF SPORTS BAG

100% polyester. Split main compartment with 2-way zip. Front pocket. Side pocket with external mesh pouch. Shoe pocket with breather holes. Padded, removable shoulder belt adjustable in length. Made for Mercedes-Benz by Cobra. Dimensions approx. 50x30x27 cm.

**B66450388**



#### GOLF GIFT SET, LARGE

Black. 100% polyester. Bag with snap hook for attachment to golf bag. Content: club towel, 3 Zero Friction golf balls, 10 Zero Friction tees, pitch fork including ball marker. Dimensions approx. 22x9x5.5 cm.

**B66450406**



#### GOLF GIFT SET, SMALL

Black. 100% polyester. Bag with snap hook for attachment to golf bag. Content: 2 Zero Friction golf balls, 5 Zero Friction tees, pitch fork including ball marker. Dimensions approx. 12.5x16.5x2 cm.

**B66450405**



#### GOLF CLUB HEADCOVER

Black. 100% polyester. Drawstring on back. Water-repellent and dirt-repellent. Made for Mercedes-Benz by Cobra. Dimensions approx. 15x15x34 cm.

**B66450391**





### MEN'S GOLF WIND JACKET

Black/grey. 100% polyester (100% recycled). Moisture regulating. Wind-resistant. Zipper with chin guard. 2 zipped pockets. Made for Mercedes-Benz by PUMA. Sizes S-XXL.

**B66450407-0411**



### LADIES' GOLF WINDCHEATER

Black. 100% polyester (100% of which has been recycled). Moisture-regulating. Wind-resistant. Zip with chin guard. 2 pockets. Made for Mercedes-Benz by PUMA. Sizes XS-XL.

**B66450442-0446**



### LADIES' GOLF SWEATER

Turquoise. 100% polyester. 4-way stretch that transports moisture away. Small stand-up collar with 1/4 zipper. Made for Mercedes-Benz by PUMA. Sizes XS-XL.

**B66450447-0451**



### WOMEN'S GOLF POLO SHIRT

Turquoise. 94% polyester/6% elastane. CLOUDSPUN technology. V-neck with collar. Made for Mercedes-Benz by PUMA. Sizes XS-XL.

**B66450452-0456**





#### MEN'S GOLF SWEATER

Grey blend. 100% polyester (61% recycled). Moisture regulating. Small stand-up collar with 1/4 zipper. Mercedes star printed on sleeve. Made for Mercedes-Benz by PUMA. Sizes S-XXL.

**B66450555-0559**



#### MEN'S GOLF SWEATER

Black/dark grey. 87% polyester/13% elastane. CLOUDSPUN technology. Crew neck. Mercedes star printed on sleeve. Made for Mercedes-Benz by PUMA. Sizes S-XXL.

**B66455018-5022**



#### MEN'S GOLF POLO SHIRT

Green. 100% polyester (100% recycled). Moisture regulating. 3-button fastening. printed 3D Mercedes star on the sleeve. Made for Mercedes-Benz by PUMA.

**B66450550-0554**



#### MEN'S GOLF POLO SHIRT

94% polyester/6% elastane. CLOUDSPUN technology. 3-button fastening with a Henley collar. Made for Mercedes-Benz by PUMA. Sizes S-XXL.

Light grey **B66450570-0574**

Green **B66450575-0579**



#### MEN'S GOLF POLO SHIRT

Navy. 89% polyester/11% elastane. Moisture regulating. 2-button fastening. Embroidered Mercedes star logo on the sleeve. Made for Mercedes-Benz by PUMA. Sizes S-XXL.

**B66450540-0544**



#### MEN'S GOLF SHORTS

Navy. 89% polyester/11% elastane. Moisture regulating. Two side pockets. Elastic waistband with drawstring. Made for Mercedes-Benz by PUMA. Sizes S-XXL.

**B66450545-0549**

#### CHILDREN'S CYCLE HELMET

White. Polycarbonate/EPS. IAS system to individually adjust the width. Quick lock. Fast Adapting System retaining strap. Removable padding. Size: 51-55 (size adjustable). Made for Mercedes-Benz by uvex.

B66450198



SHIFT  
UP A  
GEAR.



#### CHILDREN'S BIKE

White with highlights in grey and lime. Aluminium frame with steel fork. 7-speed Shimano Tourney gearbox. Alhonga aluminium rim brakes. VEE tire Crown 20-inch tyres with reflective strips. Metal mudguards. Bell. Kick stand. Saddle adjustable in height (approx. 65-71 cm). For children aged 6+ or upwards of approx. 120 cm in height. Weight approx. 11.5 kg.

B66450196



### CYCLE HELMET

Black. Polycarbonate/polystyrene. Hybrid shell technology. Vent openings. Integrated LED. IAS system to adapt to different head shapes. uvex Monomatic quick lock. Removable and washable padding. Complies with NTA-8776 standard for S pedelecs. Made for Mercedes-Benz by uvex. Size 58-61 cm (adjustable size).

**B66450197**



### CHILDREN'S BIKE

White with highlights in grey and lime. Aluminium frame with steel fork. Single-speed. Power aluminium rim brake at the front. Backpedal brake. VEE tire Crown 16-inch tyres with reflective strips. Metal mudguards. Chain protector. Soft handlebars. Bell. Kick stand. Saddle adjustable in height (approx. 50-56 cm). Age 4+, upwards of approx. 105 cm in height. Weight approx. 7.8 kg.

**B66450195**



### BALANCE BIKE

White with highlights in grey and lime. Aluminium frame. 12-inch tyres VEE Cub tyre. Adjustable saddle height (32-43 cm). Suitable for children aged 3+ or from approx. 90 cm tall. Weight approx. 3.4 kg.

**B66450194**

# TO HELP YOU REACH YOUR GOAL.



## RUCKSACK

Anthracite. 100% polyester. Water-repellent. Large main compartment. Various inside and side compartments. Wadded back system with mesh and a concealed zipped compartment. Adjustable carrying straps. Mercedes star print and SPORT print on the front, star pattern on lining. Chest strap. Dimensions approx. 26 x 12 x 52 cm. Capacity approx. 16 l.

**B66956310**

## SPORTS BAG

Anthracite/lime. 100% polyester. Water-repellent. Large main compartment, various inner and side compartments. Star pattern on lining. Dimensions approx. 60 x 28 x 30 cm. Capacity: approx. 50 l.

**B66956309**

## MEN'S SWEAT HOODIE

Black. 100% polyester. dryCELL wicks moisture away from the skin. Hood with drawcord. Zipped breast pocket. Front pouch. Made for Mercedes-Benz by PUMA. Sizes: S-XXL.

**B66959059-9063**



## HEADBAND

Anthracite/lime. 92% polyester/8% elastane. Size approx. 23 x 11.5 cm.

**B66955808**



## MULTIFUNCTIONAL SCARF

Anthracite/lime. 100% polyester. Knit tubing without seam. Size approx. 49 x 24 cm.

**B66955809**



## PERFORMANCE TOWEL

Anthracite. 88% polyester/12% polyamide. Fast-drying. Very compact. Elastic loop. Dimensions approx. 120 x 60 cm.

**B66955810**





#### LADIES' SPORTS TROUSERS

Black. 77% polyester/23% elastane. dryCELL wicks moisture away from the skin. Wide waistband with 3 mesh pockets. Reflective elements. Made for Mercedes-Benz by PUMA. Sizes XS-XL.

**B66959074-9078**



#### LADIES' WINDCHEATER

Black. 63% nylon/37% polyester. windCELL to protect from windy weather. Drawcord on hood and waistband. 2 zipped pockets on the side. Made for Mercedes-Benz by PUMA. Sizes: XS-XL.

**B66959064-9068**

#### LADIES' PERFORMANCE SHIRT

White. 50% polyester/25% cotton/25% viscose. V-mesh inserts on the chest. dryCELL wicks moisture away from the skin. Printed Mercedes star on the sleeve. Made for Mercedes-Benz by PUMA. Sizes: XS-XL.

**B66959069-9073**



#### MEN'S SPORTS TROUSERS

Black. 90% polyester/10% elastane. dryCELL wicks moisture away from the skin. Elastic waistband with drawcord. Reflective stripes on the side. Small zipper pocket at the rear. Made for Mercedes-Benz by PUMA. Sizes: S-XXL.

**B66959054-9058**



#### MEN'S PERFORMANCE JACKET

Black/orange. 100% polyester. dryCELL wicks moisture away from the skin. Vent opening on the rear. Hood. Various reflective stripes. Two zipped pockets on the side. Made for Mercedes-Benz by PUMA. Sizes: S-XXL.

**B66959044-9048**



#### MEN'S PERFORMANCE SHIRT

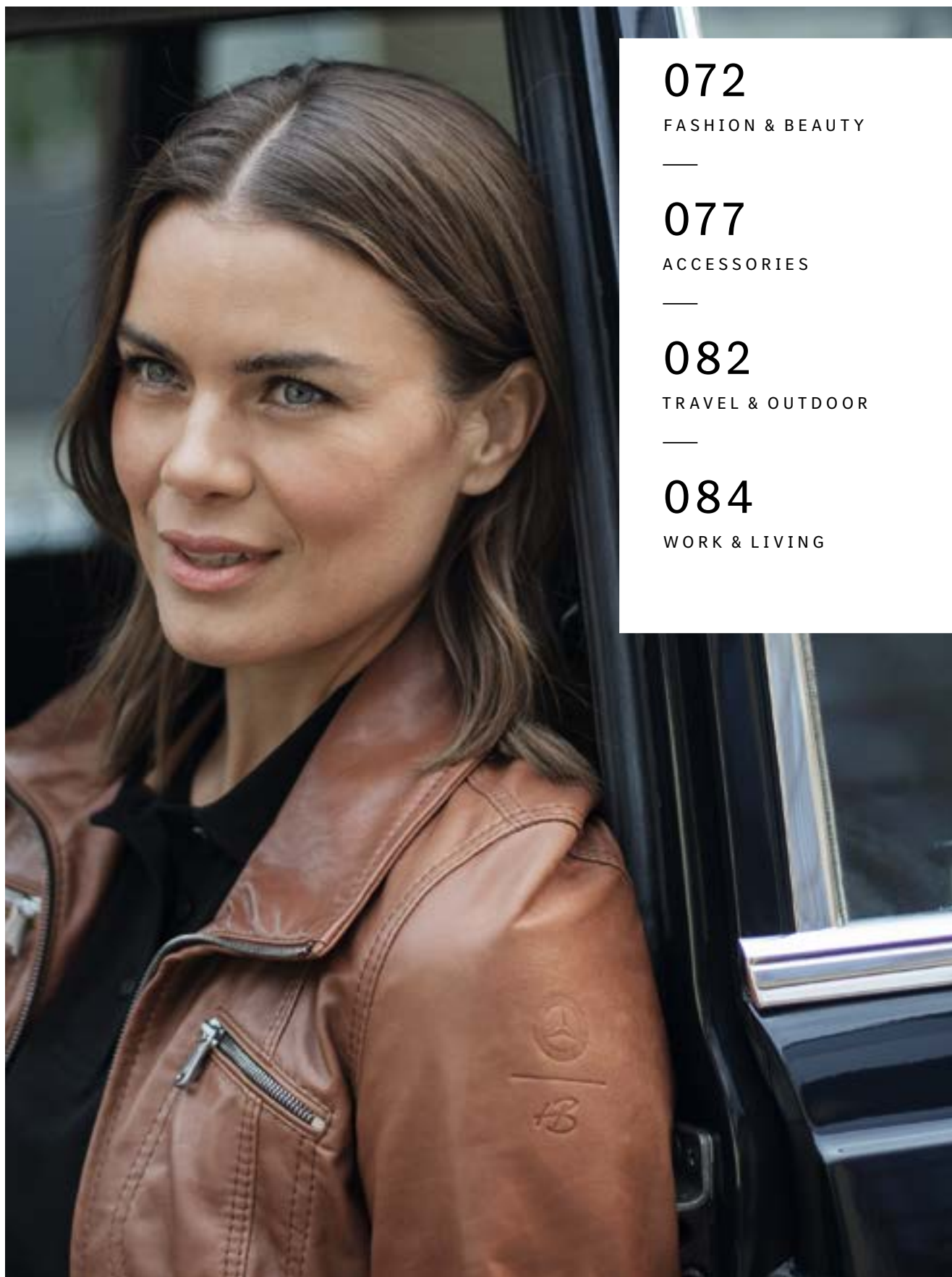
Orange. 100% polyester. dryCELL wicks moisture away from the skin. Thermo R+ technology. Various reflective stripes. Made for Mercedes-Benz by PUMA. Sizes: S-XXL.

**B66959049-9053**



One click on the desired sub-chapter will take you directly to the respective page.

# CLASSIC



072

FASHION & BEAUTY

—

077

ACCESSORIES

—

082

TRAVEL & OUTDOOR

—

084

WORK & LIVING

# ALWAYS IN STYLE.



## MEN'S LEATHER JACKET

Brown. Outer material 100% cowhide, lining 51% cotton/49% viscose. Removable collar with zipper. Robust shoulder and sleeve padding. Smocked sections on cuffs and seam. Perforated sections on front section, back section and sleeves. Modern fit. Made for Mercedes-Benz by Heinz Bauer Manufakt. Sizes 48-56.

B66041631-1635



#### MEN'S GILET

Navy. Outer material and lining: 100% polyamide. Wadding: 100% polyester. Extra high collar. Elastic side rib sections. Zipped pocket inside. Buttoned in men's jacket (B66041636-1640). Modern fit. Sizes: S-XXL.

**B66041656-1660**



#### MEN'S JACKET

Navy. Outer material 46% cotton/36% polyester/18% polyamide, split inner lining: Woven chequered at top: 100% cotton, quilted lining below: 100% polyester with lightweight padding. Wind- and water-repellent. High-closing collar. Pleats. 2-way zipper. Stand-up collar with catch and press stud fastener. 4 attached pockets. Side latch with press stud fastener for adjustment of the waist size. Modern fit. A matching gilet (B66041656-B66041660) attachable into the jacket with press studs can be purchased separately. Sizes: S-XXL.

**B66041636-1640**



#### MEN'S POLO SHIRT

Navy. Neck tape and inside of collar in off-white. 100% cotton piqué. Sizes S-XXL.

**B66041535-1539**



#### MEN'S POLO SHIRT

Black. 95% cotton/5% elastane. Button band. Collar and cuffs in single rib. Slim Fit. 1926 classic logo badge on front section. Sizes S-XXL.

**B66041597-1601**



#### MEN'S T-SHIRT

100% cotton. Single-rib cuffs. Classic 1926 logo printed on front and in nape. Sizes S-XXL.

Off-white **B66041546-1550**

Navy **B66041551-1555**

# MODERN CLASSICS.



## LADIES' LEATHER JACKET

Cognac. Outer material in nappa lambskin/antique leather, inner lining 51% cotton/49% viscose. High-closing collar with zip fastener. Two zippered pockets. Various inside pockets. Adjustable catch at the waist and cuffs. Slim fit. Historical star and Heinz Bauer logo on left sleeve. Made for Mercedes-Benz by Heinz Bauer Manufakt. Sizes 36-44.

**B66041682-1686**





### LADIES' POLO SHIRT

95% cotton/5% elastane. Vintage Mercedes star, trimmed with Swarovski® crystals on front. Gold-coloured "Mercedes" lettering on right sleeve. Sizes XS-XL.

Black/gold-coloured      **B66041510-1514**  
 Red/gold-coloured      **B66041602-1606**



### WOMEN'S GILET

Black. Outer material and lining: 100% polyamide. Wadding: 100% polyester. Extra high collar. Elastic side rib sections. Zipped pocket inside. Modern fit. Buttoned in women's jacket (B66041641-B66041645). Sizes XS-XL.

**B66041651-1655**



### LADIES' JACKET

Black. Outer material 46% cotton/36% polyester/18% polyamide, split inner lining: Woven chequered at top: 100% cotton, quilted lining below: 100% polyester with lightweight padding. Wind- and water-repellent. High-closing collar. Pleats. 2-way zipper. Stand-up collar with catch and press stud fastener. 4 attached pockets. Belt for adjustment of waist size. Modern fit. A matching gilet (B66041651-B66041655) attachable into the jacket with press studs can be purchased separately. Sizes XS-XL.

**B66041641-1645**







#### MEN'S JACKET

Black. Outer material 60% cotton/40% polyester, quilted taffeta lining 100% polyester. Wind- and water-repellent. 2-way front zip closing. Stand-up collar with catch and 2 press stud fasteners. Various pockets. Sleeve end with zipper. Shoulder and elbow area quilted and slightly padded. Modern fit. "Vintage star" metal badge in the chest area, embossed "Mercedes" lettering on the back, embossed vintage laurel leaves on sleeves. Sizes: S-XXL.

**B66041646-1650**

#### MEN'S T-SHIRT

Black. 100% cotton. Crew neck. Racing car retro print on the front. Vintage laurel leaf print on the sleeves. Woven neckband with checked design. Slim fit. Vintage star on front. Vintage "Mercedes" lettering on the back section. Sizes: S-XXL.

**B66041670-1674**



#### SWEAT HOODY

Unisex. Grey blend/bordeaux. 50% cotton/50% polyester. Hood with off-white lining. Drawstring with cord. Kangaroo pockets. Elastic ribbed hem on waistband and cuff. Modern fit. Vintage star on front. Embossed, raised Mercedes lettering on back. Embossed, raised ear print on sleeve insert in bordeaux with piping in off-white. Sizes: S-XXL.

**B66041687-1691**



#### MEN'S WIND-CHEATER PULLOVER

Navy/cognac. Outer material 45% polyamide/35% wool/20% cotton, lining 100% polyester. Windproof. Breathable. High-closing rib collar. Front, rear and sleeves knitted in a mix of patterns. Sleeves and hem rounded off with single-rib. Applications in suede look. "Historic star" badge on the sleeve. Knitted, tonal "Mercedes-Benz" lettering on back. Sizes: S-XXL.

**B66041661-1665**



### LADIES' CLASSIC SUNGLASSES

Chrome-coloured frame made of spring steel. Grey lenses by Carl Zeiss Vision. 100% UV-A/UV-B/UV-C protection (UV-400). Filter category 2. Made for Mercedes-Benz by ic! berlin.

**B66041693**



### CLASSIC MEN'S SUNGLASSES

Graphite-coloured spring steel frame. Nose pads and temples with TPE ends. Brown-graded lenses by Carl Zeiss Vision. 100% UV-A/UV-B/UV-C protection (UV-400). Filter category 2. Made for Mercedes-Benz by ic! berlin.

**B66041692**



### CAP

Black/white/bordeaux. 100% cotton canvas. Side section with black 3D laurel wreath. Diamond print under brim. Adjustable strap with silver-coloured "Mercedes" lettering and silver-coloured metal clasp with engraved "1926 star" on back. Ventilation slots. Adjustable fit.

**B66043053**



### CAP

Black. 100% cotton. Vintage star embroidered on front, trimmed with Swarovski® crystals. Embroidered vintage "Mercedes" lettering on left side in gold. Metal clasp for adjusting fit.

**B66041517**



### CAP

Navy with off-white contrasts. 100% cotton. Strap with metal clasp, embossed with star logo, for adjusting fit.

**B66041540**



### WASH BAG

Dark brown. 100% cowhide. Large main compartment, various mesh pockets, additional side pocket with zipper. Side handle. Made for Mercedes-Benz by BRIC'S. Dimensions approx. 25 x 9 x 17 cm.

**B66048057**



### WALLET

Dark brown. 100% cowhide. Twofold bank note compartment. Loose change compartment. Various card slots. Folding, transparent ID pocket. RFID protection. Made for Mercedes-Benz by BRIC'S. Dimensions approx. 12.5 x 9.5 cm.

**B66042014**



### CIGAR CASE

Dark brown. Outer material 100% cowhide, inner material 100% lambskin. With high-grade stainless steel cutter. Space for three cigars (2 x 2 cm and 1 x 1.5 cm in diameter). Dimensions approx. 8.5 x 3 x 15.5 cm.

**B66045704**



#### NODDING DOG

Brown. Plastic with synthetic fur. Gold-coloured collar with brass Mercedes star. Made in Germany. Size: approx. 29 x 18 cm.

**B66041451**



#### FLAT CAP

Brown/beige. Polyester. Herringbone design. One size, approx. 55–59 cm.

**B66041503**



#### TRILBY HAT

Natural-coloured/navy. 100% viscose. Hat band with navy/chequered pattern and sweatband made from 100% cotton. Classic star pin on hat band. Head height approx. 10 cm, brim width approx. 4 cm. Sizes S (55 cm), M (57 cm), L (59 cm), XL (61 cm).

**S B66043054**

**M-XL B66043327-3329**



#### MEN'S LEATHER GLOVES

Dark brown. 100% cowhide. Perforated and quilted inserts. Leather band can be adjusted in width featuring press studs. Made for Mercedes-Benz by Heinz Bauer Manufaktur. Sizes 8, 8.5, 9, 9.5.

**B66041666-1669**



#### 300 SL CUFF LINKS

Bronze. Front with wave structure from the interior of the 300 SL, vintage Mercedes-Benz logo on the back. Diameter approx. 1.5 cm.

**B66043326**



#### MERCEDES CLASSIC LETTERING KEY RING

Stainless steel. Flat split ring with three additional mini split rings for quick removal/replacement of individual keys. Length approx. 11 cm.

Gold-coloured/blue **B66041518**  
Silver-coloured/blue **B66041675**

#### CLASSIC KEY RING

Silver/gold/black/white. Stainless steel/epoxy resin. Snap hook. Various charms. Length approx. 11 cm.

**B66955044**



#### SINDELFINGEN KEY RING

Gold-plated brass. Flat split ring with three additional mini split rings for quick removal/replacement of individual keys. Made in Germany. Length approx. 9 cm.

**B66041523**



#### STUTTGART KEY RING

Silver. Stainless steel. Flat split ring with three additional mini split rings for quick removal/replacement of individual keys. Made in Germany. Length approx. 9 cm.

**B66041524**



#### VINTAGE STAR PINS, SET OF 6

Silver-plated brass. Pin motifs adorn different Mercedes-Benz logos from 1909 to 1989. Butterfly clasp and anti-twist lock on back. Diameter of each pin approx. 1.5 cm.

**B66043065**





#### MEN'S CLASSIC AUTOMATIC CHRONOGRAPH WATCH

Silver/off-white/blue. Stainless steel case. Off-white dial with applied hour markers and blue numerals. Sapphire crystal. Milanese watch strap with high-grade folding clasp. With date display and luminous hands. Water-resistant to 5 ATM. Approximately 42 mm in diameter. Sellita SW 500 automatic chronograph movement with stopwatch function. Swiss made.

B66041932



#### WOMEN'S CLASSIC LADY DIAMOND WRISTWATCH

Silver. Stainless steel case. Silver dial with 8 set brilliants and 4 baguette diamonds. Steel-coloured hands. Sapphire crystal. Stainless steel watch strap with high-grade folding clasp. Water-resistant to 5 ATM. Approximately 34.5 mm in diameter. Ronda 702 quartz movement. Swiss made.

B66041930



#### MEN'S CLASSIC SMALL SECOND WRISTWATCH

Silver-coloured/blue. Stainless steel housing. Silver-coloured dial with "Clous de Paris" embossing. Mineral crystal. Calfskin strap with buckle. With date display and luminous hands. Water-resistant to 5 ATM. Approximately 40.5 mm in diameter. Ronda 1019 quartz movement with satellite seconds dial. Swiss made.

B66041928





#### MEN'S CHRONOGRAPH WATCH, CLASSIC 300 SL

Stainless steel case with red colour outlay on front side of pushpiece. Beige-metallic dial with red and brown accents, simulated wave structure in the counter eyes and 300 SL emblem. Brown calfskin strap with red seam and perforated design. Steel-coloured hands. Stopwatch function. Water-resistant to 10 ATM. Diameter approx. 44 mm. Ronda 5021.D Swiss quartz movement. Swiss made.

**B66041615**



#### MEN'S CLASSIC AUTOMATIC WRISTWATCH

Bronze case with stainless steel back. Brown dial. Bronze-coloured hand. Anti-reflective sapphire glass on both sides. Brown leather strap. Water-resistant to 5 ATM. Diameter 42 mm. Sellita SW 200 automatic movement. Swiss made.

**B66041677**



#### MEN'S CLASSIC TONNEAU WRISTWATCH

Silver/black/red. Stainless steel case. Black dial with steel-coloured hour markers. Sapphire crystal. Milanese watch strap with high-grade folding clasp. Luminous dots. Water-resistant to 5 ATM. Ronda 1004 quartz movement. Swiss made.

**B66042022**



#### MEN'S CLASSIC RETRO GOLD CHRONOGRAPH WATCH

Stainless steel case with rose gold-coloured PVD coating. Silver-coloured dial with hours and minutes, Super-LumiNova® luminous dots and three-dimensional cap structure in centre. Leather strap with crocodile effect. Rose gold-coloured luminous hands. Stopwatch function. Water-resistant to 5 ATM. Diameter approx. 42 mm. Ronda 5030 Swiss quartz movement. Swiss movt.

**B66041617**



#### MEN'S CHRONOGRAPH, CLASSIC RALLY

Square stainless steel case. Black and beige dial with bordeaux red outline. Steel-coloured hands with Super-LumiNova® detail, bordeaux red second hand. Anti-reflective sapphire glass on both sides. Black calfskin strap with perforation and red lining. Water-resistant to 5 ATM. Dimensions 40x40 mm. Ronda Z60 quartz movement. Swiss made.

**B66041679**



#### WOMEN'S CLASSIC LADY ROMAN WATCH

Stainless steel case with gold-coloured PVD coating. Silver-coloured dial with gold-coloured Roman numerals and hour markers. Gold-coloured hands. Stainless steel Milanese mesh strap with gold-coloured PVD coating. Water-resistant to 5 ATM. Diameter 34 mm. Ronda 773 quartz movement. Swiss movt.

**B66041570**



#### BUSINESS BAG

Dark brown. Cowhide. Various inside and side compartments. Identity tag. Removable shoulder strap. Mercedes-Benz Classic embossing on inside and outside. Made for Mercedes-Benz by BRIC'S. Dimensions approx. 38 x 7 x 28 cm.

B66042012

## THE NEW TRAVEL CLASS.



#### WEEKEND BAG

Dark brown. Cowhide. Various pockets. Straps on back section for attachment to the trolley suitcase. Shoulder straps. Reinforced base. Feet in base. Mercedes-Benz Classic embossing on inside and outside. Made for Mercedes-Benz by BRIC'S. Dimensions approx. 55 x 20 x 32 cm.

B66042011



#### RUCKSACK

Dark brown. Cowhide. Various compartments. Breathable rear face with strap including safety pocket with zipper for securing onto the trolley handle. Carrying handle. Padded, breathable and adjustable shoulder carrier. Detachable address tag. Made for Mercedes-Benz by BRIC'S. Dimensions approx. 30 x 18 x 43 cm.

B66042013



### COMPACT UMBRELLA

Dark brown. Canopy 100% polyester. Aluminium frame. Fibreglass/aluminium rails. Hook handle with genuine leather trim. Automatic opening and closing. Windproof design. Fastening tab with Velcro fastener. Matching case with zipper. Diameter when open approx. 103 cm. Length approx. 35 cm.

**B66041681**



### 300 SL SHIFT LEVER KNOB COMPACT UMBRELLA

Brown. Chromed steel shaft. 100% polyester canopy with special water- and dirt-repellent coating. Fibreglass/metal ribs. Opened manually. Windproof design. Handle designed to resemble 300 SL shift lever knob. Diameter when open approx. 97 cm.

**B66041533**



### 300 SL SHIFT LEVER KNOB GUEST UMBRELLA

Brown. 100% polyester canopy with water- and dirt-repellent coating. Steel shaft, fibreglass ribs. Windproof. Diameter when open approx. 130 cm.

**B66043226**



### TROLLEY WITH 4 ROLLERS

Beige/dark brown. Polycarbonate Makrolon®/cowhide. Two inner compartments. Pull-out handle with three fixed positions. Double rollers with rubber coating. Integrated TSA lock. Identity tag. Mercedes-Benz Classic embossing on inside and outside. Made for Mercedes-Benz by BRIC'S. Dimensions approx. 38 x 20 x 50 cm.

**B66042015**



### PICNIC HAMPER

Dark brown. Poly rattan. Fasteners and carrying handles made from leather. Reinforced carry handles made from canvas. Content: 2 x cutlery set, 2 x porcelain dishes, 2 x coffee cups, 2 x juice glasses, 1 x pepper pot, 1 x salt pot, 2 x serviettes 40 x 40 cm, 1 x tablecloth 140 x 140 cm. Dimensions approx. 50 x 34 x 31 cm.

**B66041562**

### PICNIC BLANKET, HERRINGBONE

Brown/ivory. Top in herringbone weave made from soft polyester fleece. Bottom made from water-repellent polyamide fabric. Strap with size-adjustable strap and carrying handle. Made for Mercedes-Benz by FRAAS. Size: approx. 140 x 200 cm.

**B66041563**



### 300 SL COMPUTER MOUSE

Red. Wireless. In form of 300 SL. LED headlamps and tail lights with On/Off switch. 2.4 GHz wireless technology. USB nano receiver. High-resolution optical sensor with switchable sensitivity (between 800 dpi and 1,600 dpi). Compatible with all standard operating systems.

**B66041625**



### BALLPOINT PEN

Metal barrel. Twist-action. Star logo on top of cap.

Black/silver-coloured	<b>B66043350</b>
Red/silver-coloured	<b>B66043351</b>
Silver-coloured	<b>B66043352</b>



### SET OF MAGNETS

9 different Classic motifs.  
In transparent plastic box.  
3 magnets measuring approx. 2.2x4.5 cm.  
6 magnets measuring approx. 2.2x2.2 cm.

**B66041558**

**MAKES EVERY  
DAY SPECIAL.**

**CRYSTAL BALLPOINT PEN**

Rose gold colours. Brass/glass. Swarovski® Crystal Fine Rocks on barrel. Twist cap. Writes in blue. Vintage logo lasered on the top side. Made for Mercedes-Benz by Swarovski®.

**B66041612**





#### WINE STOPPERS, SET OF 4

Various colours. Wood/stainless steel. Gear knob design. 3 wine stoppers with a wooden head, 1 champagne stopper with stainless steel head. In high-quality gift packaging. Dimensions of packaging approx. 21.5 x 15.5 x 5.5 cm.

**B66045160**



#### WINE SET, 300 SL GEAR KNOB

Cream beige/silver-coloured. Wine stopper with wooden head in form of 300 SL gear knob. Stainless steel waiter corkscrew. In black gift box. Dimensions of packaging approx. 10.8 x 14.3 x 5.5 cm.

**B66041565**



#### 300 SL DESK CLOCK

Silver. Aluminium/stainless steel. In the shape of the 300 SL. Wave pattern on dial. Dimensions approx. 20 x 3.5 x 6 cm.

**B66041613**



One click on the desired sub-chapter will take you directly to the respective page.

# MOTORSPORTS



087

FASHION & BEAUTY

—

099

ACCESSORIES

MADE FOR  
THE RACE.



**LIGHTWEIGHT MEN'S JACKET**

Black. 100% polyester. Hood. Ribbed cuffs. Zipped side pockets. Mercedes star on the zipper tag. Sizes: XS-XXL.

**B67996856-6861**

### MEN'S SWEAT HOODIE

80% cotton/20% polyester. Front pouch.  
Hood with drawcord. Sizes: XS-XXL.

Grey      B67996874-6879  
Black     B67996868-6873



### MEN'S LIGHTWEIGHT GILET

Black with Petronas green contrasts.  
100% polyester. Wadded. Mercedes star  
on the zipper. Sizes: XS-XXL.

B67996862-6867

READY.  
SET.  
DRIVE.



**WIRED RUN LIFESTYLE SNEAKER**

Black. 100% polyester. MERCEDES AMG PETRONAS FORMULA ONE TEAM logo and PUMA Cat logo. Made for Mercedes-Benz by PUMA. Sizes 39-45.

**B67997964-7970**



**MEN'S T-SHIRT**

Black. 100% cotton. Regular fit. Made for Mercedes-Benz by PUMA. Sizes XS-XXL.

**B67996942-6947**



**MEN'S T-SHIRT**

100% cotton. Colour blocking on front. Ribbed collar and sleeves. Regular fit. MERCEDES AMG PETRONAS FORMULA ONE TEAM logo badge and PUMA Cat logo on front. Made for Mercedes-Benz by PUMA. Sizes XS-XXL.

Black      **B67997910-7915**  
Silver grey   **B67997916-7921**



**MEN'S T-SHIRT**

100% cotton. Neck band in contrasting colour. Regular fit. Made for Mercedes-Benz by PUMA. Sizes XS-XXL.

Green      **B67997827-7832**  
Black      **B67997821-7826**



#### MEN'S SWEAT JACKET

100% cotton. Translucent green pattern. Double-rib cuffs and hem. Regular fit. Made for Mercedes-Benz by PUMA. Sizes XS-XXL.

Black **B67997833-7838**  
Silver-grey **B67997839-7844**



#### MEN'S JOGGING BOTTOMS

100% cotton. Translucent green pattern. Double rib. Regular fit. Made for Mercedes-Benz by PUMA. Sizes XS-XXL.

Black **B67997922-7927**  
Silver-grey **B67997928-7933**



#### MEN'S POLO SHIRT

59% cotton/41% polyester. Striped. Ribbed collar and cuffs. Regular fit. Made for Mercedes-Benz by PUMA. Sizes XS-XXL.

Black **B67997845-7850**  
Silver grey **B67997851-7856**



#### MEN'S SWEATSHORTS

Black. 100% cotton. Translucent green pattern. Reflective piping. Double-rib waistband. Regular fit. Made for Mercedes-Benz by PUMA. Sizes XS-XXL.

**B67997958**





#### TWO-PIECE FOR INFANTS

Silver-grey. Print inspired by the racetrack. Regular fit. MERCEDES AMG PETRONAS FORMULA ONE TEAM logo and PUMA Cat logo. Made for Mercedes-Benz by PUMA. Sizes 62-104.

**B67996972-6979**



#### CHILDREN'S T-SHIRT

White. 100% cotton. All over print inspired by the racetrack. Regular fit. MERCEDES AMG PETRONAS FORMULA ONE TEAM logo and PUMA Cat logo on sleeve. Made for Mercedes-Benz by PUMA. Sizes 116-164.

**B67997952-7956**



#### CHILDREN'S SWEATSHORTS

Black. 77% cotton/23% polyester. Regular fit. Made for Mercedes-Benz by PUMA. Sizes 116-164.

**B67997946-7950**



#### CHILDREN'S SWEAT JACKET

Black. 23% polyester, 77% cotton. Regular fit. MERCEDES AMG PETRONAS FORMULA ONE TEAM logo and PUMA Cat logo. Made for Mercedes-Benz by PUMA. Sizes 116-164.

**B67997857-7861**



#### LADIES' T-SHIRT

Black. 100% cotton. Regular fit. MERCEDES AMG PETRONAS FORMULA ONE TEAM logo on front, PUMA Cat logo on sleeve. Made for Mercedes-Benz by PUMA. Sizes XXS-XL.

**B67997934-7939**



#### LADIES' SPORTS TROUSERS

Black. 89% polyester, 11% elastane. V-shaped waist band rear. Tight fit, highwaisted fit. MERCEDES AMG PETRONAS FORMULA ONE TEAM logo and PUMA Cat logo on front of leg. Made for Mercedes-Benz by PUMA. Sizes XXS-XL.

**B67997940-7945**



**WOMEN'S TEAM POLO SHIRT**

Black. 95% cotton/5% elastane. Official MERCEDES AMG PETRONAS MOTORSPORT polo shirt for the 2020 Formula 1 season. Short sleeves. Striped band on sides, button front and on the collar. Slim fit. Sizes XXS-XL.

B67997031-7036



**CHILDREN'S T-SHIRT, DRIVER**

95% cotton/5% elastane. Official MERCEDES AMG PETRONAS Motorsport driver T-shirt for the 2020 Formula 1 season. Short sleeves. Stripe on sides. Regular fit. Sizes 92-164.

Black B67996910-6916  
White B67996917-6923



**WOMEN'S T-SHIRT, DRIVER**

95% cotton/5% elastane. Official MERCEDES AMG PETRONAS Motorsport driver T-shirt for the 2020 Formula 1 season. Short sleeves. Stripe on sides. Regular fit. Sizes XXS-XL.

White B67996960-6965  
Black B67996904-6909



#### MEN'S POLO SHIRT

Black. 95% cotton/5% elastane. Official MERCEDES AMG PETRONAS MOTORSPORT polo shirt for the 2021 Formula 1 season. Stripe detail on button band and collar. Regular fit. Various sponsor logos. Sizes XS-XXL.

**B67996980-6985**



#### MEN'S T-SHIRT, DRIVER

95% cotton/5% elastane. Short sleeves. Stripe on sides. Regular fit. Sizes: XS-XXL.

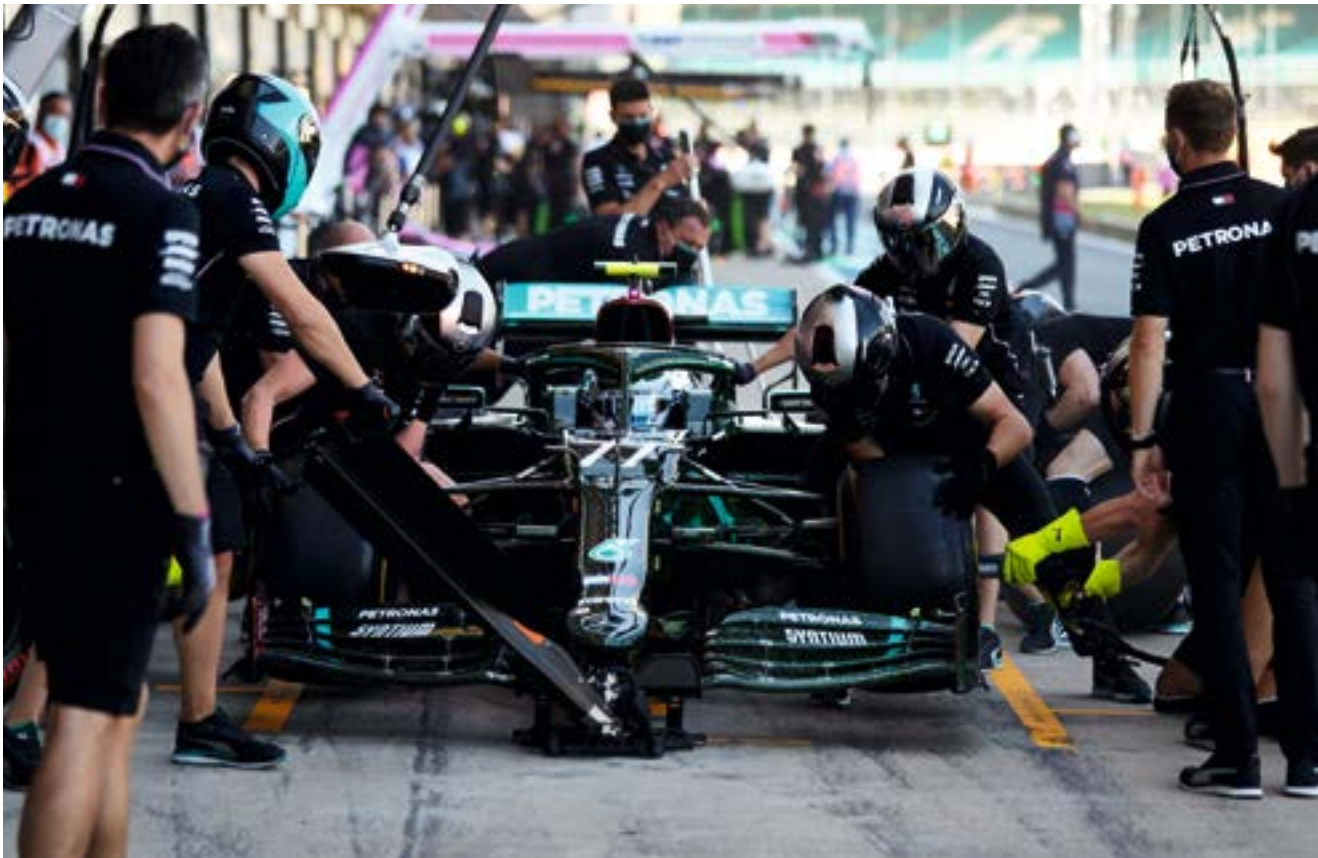
White (2020 Formula 1 season) **B67996930-6935**  
 Black (2021 Formula 1 season) **B67996986-6991**



#### MEN'S SHIRT, TEAM

White. 50% cotton/50% polyester. Official MERCEDES AMG PETRONAS MOTORSPORT team shirt for the 2020 Formula 1 season. Button-down collar. Short sleeves. Breast pocket. Regular fit. Sizes: XS-XXL.

**B67996954-6959**



**BOTTAS CAP**

100% polyester. Official Valtteri Bottas cap for the 2021 Formula 1 season. Mercedes star stitched on the front, "VB77" logo on the back, MERCEDES AMG PETRONAS MOTORSPORT logo on the sides, Monster Energy® logo on the underside of the brim, "Never give up" lettering on sandwich peak. Plastic fastener.

White	B67996381
Black	B67996396
Blue	B67996348



**TEAM CAP**

100% polyester. Official team cap for the 2021 Formula 1 season. Mercedes star stitched on the front, MERCEDES AMG PETRONAS MOTORSPORT logo on the side, "Mercedes-AMG Petronas" lettering on the sandwich peak, "Driven by each other" lettering on the plastic fastener. Adjustable fit.

Black	B67996399
White	B67996409





#### HAMILTON CAP

100% polyester. Official Lewis Hamilton baseball cap for the 2021 Formula 1 season. Mercedes star stitched on front, embroidered "44" on upper side of peak, Lewis Hamilton Wings logo as well as MERCEDES AMG PETRONAS Motorsport logo on back, GRAN TURISMO logo on the side, Monster Energy® logo on the underside of the brim. Plastic fastener. Adjustable fit.

Black B67996415  
White B67996416

#### FLAT BRIM CAP, HAMILTON

100% polyester. Official Lewis Hamilton Flat Brim Cap for the 2021 Formula 1 season. Mercedes star stitched on front, embroidered "44" on upper side of peak, Lewis Hamilton Wings logo as well as MERCEDES AMG PETRONAS Motorsport logo on back, GRAN TURISMO logo on the side, Monster Energy® logo on the underside of the brim. Plastic fastener. Adjustable fit.

Black B67996330  
White B67996331



#### CHILDREN'S CAP, HAMILTON

Black. 100% polyester. Mercedes star on the front, MERCEDES AMG PETRONAS MOTORSPORT logo and Lewis Hamilton Wings on the rear, GRAN TURISMO logo on the side, "44" on the top of the brim. Adjustable fit.

B67996398



#### MEN'S TEAM KNITTED HAT

Grey. 100% cotton. Stripe details. Official MERCEDES AMG PETRONAS MOTORSPORT team beanie for the 2021 Formula 1 season.

B67996397



#### LIGHTWEIGHT MEN'S JACKET

Black. 100% polyester. Colour gradient. Stripe details on chest, sleeve ends and back. Front pockets. Regular fit. Sizes XS-XXL.

B67997043-7048



#### MEN'S GILET

Black. 100% polyester. Slightly padded. Stripe design on the chest. Front zip. Regular fit. Mercedes-Benz EQ FORMULA E TEAM logo. Sizes S-XXL.

B67997993-7997



#### MEN'S POLO SHIRT

White. 100% cotton. Stripe design on the collar, button band, shoulder and sleeves. Regular fit. Mercedes-Benz EQ FORMULA E TEAM logo. Sizes S-XXL.

B67997988-7992



### MEN'S JACKET

Black. 100% polyester. Stripe design on side pockets, sleeve end, neck and front zip. Regular fit. Mercedes-Benz EQ FORMULA E TEAM logo, various sponsor logos. Sizes XS-XXL.

**B67997982-7987**



### MEN'S POLO SHIRT

Black. 100% polyester. Stripe design on front and back, on sleeve ends and on neck. Regular fit. Mercedes-Benz EQ FORMULA E TEAM logo, various sponsor logos. Sizes S-XXL.

**B67997977-7981**



### MEN'S T-SHIRT

90% cotton/10% spandex. Short sleeves. Stripe design on front and back, on sleeve ends and on neck. Regular fit. Mercedes-Benz EQ FORMULA E TEAM logo, various sponsor logos. Sizes S-XXL.

Black **B67996465-6469**  
White **B67996486-6490**



### CAP, TEAM FORMULA E

100% polyester. Official Formula E team cap. Sandwich peak in contrasting colour. Mercedes star on the front, NEW ERA logo and EQ Electric Intelligence by Mercedes-Benz logo on the side. Made for Mercedes-Benz by NEW ERA. Adjustable fit.

Black **B67996559**  
White **B67996560**

# GET READY FOR THE RACE.



## MEN'S MOTORSPORTS CHRONOGRAPH WATCH

Silver/black/blue. Stainless steel case. Silver dial with steel-coloured hour markers. Mineral crystal. Blue leather watch strap with fabric structure. Date feature. Water-resistant to 10 ATM. Approximately 43.5 mm in diameter. Ronda 5030 quartz movement with stopwatch function. Swiss made.

B67996388

## MEN'S AUTOMATIC CHRONOGRAPH, MOTORSPORTS

Stainless steel case with PVD coating. Black dial. Steel-coloured hour and minute hands, blue second hand, tips with Super-LumiNova® detail. Anti-reflective sapphire glass on both sides. Black leather strap. Water-resistant to 10 ATM. Diameter 43 mm. ETA 7750 automatic movement. Swiss made.

B66954398

## MEN'S MOTORSPORTS CHRONOGRAPH WATCH

Black/silver/blue. Stainless steel case. Black dial with steel-coloured hour markers. Mineral crystal. Stainless steel watch strap with high-grade folding clasp. Date feature. Water-resistant to 10 ATM. Approximately 43.5 mm in diameter. Ronda 5030 quartz movement with stopwatch function. Swiss made.

B67996386





#### DRAWSTRING SPORTS BAG

Black. 100% polyester. Front zipper pocket. Cord. Mercedes-Benz EQ FORMULA E TEAM logo.

**B67996459**



#### DRAWSTRING SPORTS BAG

Black. 100% polyester. Large main compartment with tunnel drawstring. Front compartment with zipper. Dimensions approx. 48 x 28 x 32 cm.

**B67996359**



#### SPORTS BAG

Black/Petronas green. 100% polyester. Main compartment and small, zipped front pocket. Adjustable shoulder strap. Dimensions approx. 52 x 27 x 39 cm.

**B67996380**



#### RUCKSACK

Black. 100% polyester. Padded back section. Various pockets. Dimensions approx. 29 x 16 x 46 cm.

**B67996328**



#### LIGHTWEIGHT RUCKSACK

Black. 100% polyester. Lightly padded shoulder straps. Rucksack can be compactly stored in front pocket. Dimensions approx. 39 x 7.5 x 51 cm.

**B67996347**



#### MUG

Black. Ceramic. MERCEDES AMG PETRONAS MOTORSPORT logo on front. Three-coloured circle on bottom of mug. Capacity approx. 0.3 l.

**B67996457**

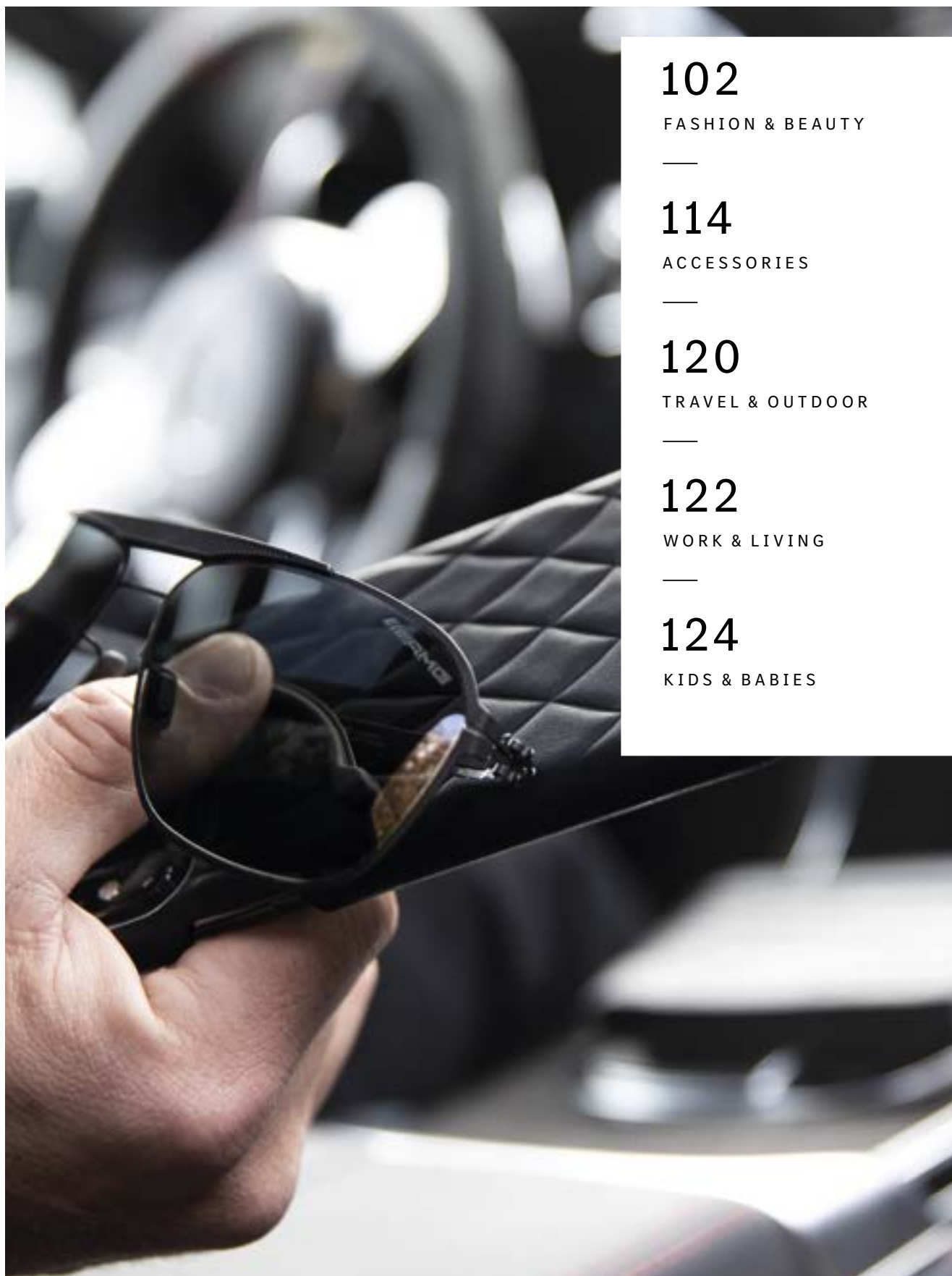


#### THERMAL MUG

Black. 84% stainless steel/16% plastic. Removable lid. Height approx. 14 cm, content approx. 400 ml.

**B67996329**





## 102

FASHION & BEAUTY

---

## 114

ACCESSORIES

---

## 120

TRAVEL & OUTDOOR

---

## 122

WORK & LIVING

---

## 124

KIDS & BABIES

# INSPIRED BY PERFORMANCE.



## AMG MEN'S JACKET

Black. 72% polyamide/12% polyester/9% polypropylene/7% elastane. High-closing collar. Stitching in the front, back and on the sleeves. Elastic inserts in the side sections and on the sleeves. Elastic cuffs and seam. Wrist support. Zipped side pockets. Elaborate lining with red contrasts. Slim fit. Black sewn-on plastic badge with white AMG 3D logo print in the chest area. ASSOS logo badge on left sleeve. AMG Performance Wear handcrafted by ASSOS of Switzerland. Sizes XS-XXXXL.

B66959128-9135



### AMG SOCKS

Pack of 2. Unisex. Black with red and white contrasts. 65% cotton/ 20% polyamide/15% elastane. Breathable. Embroidered AMG and ASSOS logo. AMG Performance Wear handcrafted by ASSOS of Switzerland. Sizes 0 (36-39), I (40-43), II (44-47).

**B66959099-9101**



### AMG LADIES' JACKET

Black. 70% polyamide, 22% polyester, 8% elastane. High-closing collar. Stitching in the front, back and on the sleeves. Elastic inserts in the side sections and on the sleeves. Elastic cuffs and seam. Wrist support. Zipped side pockets. Elaborate lining with red contrasts. Slim fit. Black sewn-on plastic badge with white AMG 3D logo print in the chest area. ASSOS logo badge on left sleeve. AMG Performance Wear handcrafted by ASSOS of Switzerland. Sizes XXS-XXXL.

**B66959200-9207**



### AMG MEN'S TROUSERS

Black. 74% polyamide/16% polyester/10% elastane. Partially elastic waistband. Zippered pockets with puller and tonal embroidering. Slim fit. Black sewn-on plastic badge with white AMG 3D logo print on waistband. Zipper puller and plastic badge on left thigh with ASSOS logo. AMG Performance Wear handcrafted by ASSOS of Switzerland. Sizes XS-XXXXL.

**B66959144-9151**



#### AMG MEN'S POLO SHIRT

Black with grey and red contrasts. 92% cotton/8% elastane. Single-rib collar and hem. Red neckband. Grey button band. Side vents. Slim fit. White AMG 3D logo print on chest. White ASSOS 3D logo print on the left sleeve. AMG Performance Wear handcrafted by ASSOS of Switzerland. Sizes XS-XXXXL.

**B66959152-9159**



#### AMG MEN'S FUNCTIONAL SHIRT, LONG SLEEVE

Black/grey/red. 90% polyamide/8% elastane/2% polyester. Breathable. Zipper pocket. High-closing collar. Longer seam in the back. Slim fit. Black sewn-on plastic badge with white AMG 3D logo print in the chest area. Zipper puller with ASSOS logo. AMG Performance Wear handcrafted by ASSOS of Switzerland. Sizes XS-XXXXL.

**B66959160-9167**



#### AMG LADIES' POLO SHIRT

Black with grey and red contrasts. 92% cotton/8% elastane. Single-rib collar and cuffs. Red neck band. Grey button front. Side vents. Slim fit. White AMG 3D logo print on chest. White ASSOS 3D logo print on left sleeve. AMG Performance Wear handcrafted by ASSOS of Switzerland. Sizes XXS-XXXL.

**B66959192-9199**



#### AMG WINDCHEATER

Unisex. Black with red contrasts. 88% polyamide/8% elastane/4% polyester. Wind resistant. Fast-drying. High-closing collar. Grey inserts on side sections and sleeves. Elastic seams. Longer seam in the back. Slim fit. Black sewn-on plastic badge with white AMG 3D logo print in the chest area. Zipper puller with ASSOS logo. Sewn-on black plastic badge with co-branding logo. Unisex. AMG Performance Wear handcrafted by ASSOS of Switzerland. Sizes XS-XXXXL.

**B66959168-9175**



#### AMG MEN'S FUNCTIONAL SHIRT, SHORT SLEEVE

Black/grey/red. 90% polyamide/8% elastane/2% polyester. Breathable. Concealed zipper pocket. High-closing collar. Elastic seams. Longer seam in the back. Slim fit. Black sewn-on plastic badge with white AMG 3D logo print in the chest area. Zipper puller with ASSOS logo. AMG Performance Wear handcrafted by ASSOS of Switzerland. Sizes XS-XXXXL.

**B66959176-9183**



#### AMG VEST, LONG SLEEVE

Unisex. Black. 85% cotton/15% polyester. Base layer. Single-rib V-neck with hem. Single-rib cuffs. White AMG logo knitted onto the chest section. Unisex. AMG Performance Wear handcrafted by ASSOS of Switzerland. Sizes 0 (XS-S), I (M-L), II (XL-2XL), III (3XL-4XL).

**B66959188-9191**



#### AMG VEST, SHORT SLEEVE

Unisex. Black. 85% cotton/15% polyester. Base layer. Single-rib V-neck with hem. Single-rib cuffs. White AMG logo knitted onto the chest section. AMG Performance Wear handcrafted by ASSOS of Switzerland. Sizes 0 (XS-S), I (M-L), II (XL-2XL), III (3XL-4XL).

**B66959184-9187**





Mercedes-AMG GLC 43 4MATIC: Combined cycle fuel consumption: 10.6-10.2 l/100 km; Average CO<sub>2</sub> emissions: 242.0-234.0 g/km.

—  
TUNE YOUR  
WARDROBE.  
—

#### MEN'S AMG QUILTED JACKET

Black. 100% polyester, high-quality wadding by DuPont™. Diamond stitching in front and back sections in the style of the AMG car seat. High-closing collar. Various pockets. Collar, seam and cuffs with single rib. Slim fit. AMG logo on imitation leather badge on left sleeve. Sizes: S-XXL.

**B66958944-8948**



#### AMG MEN'S PERFORMANCE JACKET

Selenite grey/black. Outer fabric softshell 100% polyester, body 100% nylon with polyurethane coating, taffeta lining and lightweight wadding 100% polyester. Wind and water-repellent coating. Detachable hood. Various inside pockets. Adjustable cuffs. Slim fit. White AMG logo print on front. Sizes: S-XXL.

**B66957495-7499**



#### MEN'S GILET

Selenite grey/red/black. Outer fabric softshell 100% polyester, body 100% nylon with polyurethane coating, taffeta lining and lightweight wadding 100% polyester. Detachable hood. Water-resistant zip. High-closing collar with chin guard. Various pockets. Slim fit. Sizes: S-XXL.

**B66958533-8537**



#### AMG LADIES' GILET

Selenite grey/red/white. Outer fabric softshell 100% polyester, body 100% nylon with polyurethane coating, taffeta lining and lightweight wadding 100% polyester. Windproof. Warm. Detachable hood. Water-resistant zip. High-closing collar with chin guard. Various pockets. Slim fit. Sizes XS-XL.

**B66958563-8567**



#### AMG MEN'S PERFORMANCE JACKET

Black. 100% polyester. Water and windproof. Breathable. Zips on underside of sleeve for additional ventilation. Purtex® waterproofing. Dual-Protection-System®. Size-adjustable hood. Width-adjustable sleeves. Extended elastic cuffs with thumb hole. Various pockets. Modern fit. White AMG 3D logo print on chest, AMG logo print on the inside on the back, black lining separation band featuring white AMG logo, pocket with white AMG 3D logo print. Sizes: S-XXL.

**B66958646-8650**



#### AMG LADIES' PERFORMANCE JACKET

Black/white. 100% polyester. Water and windproof. Breathable. Openings on front and rear for additional ventilation. Purtex® waterproofing. Dual-Protection-System®. Size-adjustable hood. Width-adjustable sleeves. Extended elastic cuffs with thumb hole. Various pockets. Modern fit. White AMG 3D logo print on chest, AMG logo print on the inside on the back, white lining separation band featuring black AMG logo, pocket with white AMG 3D logo print. Sizes XS-XL.

**B66958651-8655**



#### MEN'S AMG LEATHER JACKET

Black with silver grey and red contrasts. Outer material 100% Exquisite nappa lambskin, lining: 100% viscose with antibacterial silver finish. Removable collar with zipper. Perforated sections in the shoulder and sleeve area. Modern fit. AMG logo embossing and Heinz Bauer Manufakt logo on left sleeve and on inside on the back. Made for Mercedes-AMG by Heinz Bauer Manufakt. Sizes 48-56.

B66958641-8645



### AMG MEN'S BOMBER JACKET

Black. Perforated outer material and taffeta lining made from 100% polyester. Ribbed collar, cuffs and seam. Zipped, angled side pockets. Slim fit. Black plastic badge with white AMG 3D logo and zip puller with 3D logo. Sizes: S-XXL.

**B66958939-8943**



### MEN'S AMG RAIN JACKET

Black/red. Outer material 88% nylon/12% elastane, mesh: 100% polyester. High-closing front zip fastening. Storable hood. Various pockets. Slim fit. Red AMG logo outline on the chest, vertical, black AMG logo on the rear. Sizes: S-XXL.

**B66958885-8889**



### MEN'S AMG SWEAT JACKET

Black with red contrasts. Outer material 65% polyester/35% viscose, lining 100% polyester. Hood with adjustable drawstring. Front zipper. Zipped side pockets. Sleeves and hem rounded off with single rib. Slim fit. Black, raised AMG logo print on rear. Sizes: S-XXL.

**B66958949-8953**



#### AMG MEN'S POLO SHIRT

White/black. 95% cotton/5% elastane. Short sleeves. Two-tone zip. Side vents. Single-rib collar. Black neck tape and side vent band with white, woven AMG logo. Black AMG logo print on inside of back. Black AMG logo print on the zip bar. AMG logo on Autolock zip puller. Slim fit. Size: S-XXL.

**B66958676-8680**



#### LADIES' POLO SHIRT

Black/white. 95% cotton/5% elastane. Short sleeves. Two-tone zip. Side vents. Collar and cuffs with single rib. Cuffs with white, knitted stripe. White neck band and side groove band with a black, woven AMG logo. White AMG logo print on inside of back. Black AMG logo print on the zip bar. AMG logo on Autolock zip puller. Slim fit. Sizes: XS-XL.

**B66958728-8732**



#### AMG MEN'S POLO SHIRT

Black/red. 88% MicroModal® from Lenzing/12% elastane. Breathable. Moisture wicking. Stand-up collar. Slim fit. Sizes: S-XXL.

**B66958895-8899**



#### AMG MEN'S POLO SHIRT, BUSINESS

Grey blend. 100% cotton. Polo neck with 3D knitted pattern. Button bar with 3 gun metal buttons in a mother-of-pearl look. Single-rib cuffs. Side vents. Slim fit. 3D AMG print on chest. Sizes XS-XXXXL.

**B66959402-9408**



#### AMG LADIES' POLO SHIRT

Black/red. 88% Modal Micro (TENCEL™) by Lenzing/12% elastane. Breathable. Moisture wicking. Mesh inserts in bottom side seam. Stand-up collar. V neck. Slim fit. Sizes: XS-XL.

**B66958890-8894**





#### AMG SWEATSHIRT

Unisex. Grey blend. 65% polyester/30% viscose/5% elastane. Crew neck. Red crescent on the inside of the neck. Neck, seam and cuffs with single rib. A raised AMG 3D logo on the chest as well as the black neck band with interwoven white AMG logo round off the design. Modern fit. Sizes: XS–XXL.

**B66958933–8938**



#### AMG MEN'S T-SHIRT

100% cotton. Crew neck. Embossed and raised AMG logo in 3D look on front section. Slim fit. Sizes: XS–XXL.

Black **B66958906–8911**  
White **B66958900–8905**



#### AMG MEN'S SWEAT SHORTS

Grey blend with black contrasts. 65% polyester/30% viscose/5% elastane. Various pockets. Drawstring with strap. Modern fit. Sizes: XS–XXL.

**B66958912–8917**



#### AMG SWEAT HOODIE

Unisex. Black/white. 80% polyester/15% viscose/5% elastane. Padded hood. Single-rib cuffs and hem. Slim fit. Woven white AMG logo on neck band. White AMG logo print on sleeves. White AMG 3D logo print on chest. Sizes XS-XXXXL.

**B66959303-9309**



#### AMG CHILDREN'S T-SHIRT

Black/grey blend/red. 100% cotton. Modern fit. Red neckband with woven white AMG logo, large white AMG logo print on the side, white 3D AMG logo print on the back section. Sizes 116/122-152/158.

**B66959392-9395**



#### AMG CHILDREN'S SWEAT JACKET

Grey blend/black. 64% cotton/32% polyester/4% elastane. Hood with lining in red single jersey. Single-rib cuffs and hem. Red front zipper. Modern fit. Woven white AMG logo on neck band. White AMG print on sleeves. White AMG 3D logo print on chest. Sizes 116/122-152/158.

**B66959388-9391**



#### AMG CHILDREN'S POLO SHIRT

Grey blend/black/red. 100% cotton. Single-rib polo neck and cuffs. Button front. Modern fit. Large white 3D AMG logo print on side, white AMG 3D logo print on front and back. Sizes 116/122-152/158.

**B66959396-9399**



#### CHILDREN'S AMG CAP

Black/grey blend. Outer material and lining 100% cotton, side and back panels 60% polyester/40% cotton. Rubber-coated white 3D AMG logo print. Red inner straps with white AMG logo print. Adjustable fit.

**B66959211**



#### AMG CAP

Black/white. 100% cotton. 5-panel baseball cap. Rubber-coated white 3D AMG logo print. Red inner straps with white AMG logo print. Adjustable fit.

**B66959210**



#### AMG LADIES' T-SHIRT

Red. 94% cotton/6% elastane. Crew neck. Sleeves and hem with tonal lockstitch seam. Slim fit. White AMG logo on neck band. White AMG 3D logo print on chest. White AMG logo print on back. Sizes XXS-XL.

**B66959310-9315**

# NEW STYLE VIEW.



Mercedes-AMG GLC 43 4MATIC: Combined cycle fuel consumption: 10.6–10.2 l/100 km; Average CO<sub>2</sub> emissions: 242.0–234.0 g/km.



## AMG BUSINESS MEN'S SUNGLASSES

Black spring steel frame. Grey lenses by Carl Zeiss Vision. 100% UV-A/UV-B/UV-C protection (UV-400). Filter category 3. Made for Mercedes-AMG by ic! berlin.

**B66955820**



## AMG KNITTED SCARF

Black. 100% cotton. Two-ply finish. Knitted white AMG logo.

**B66959209**



#### AMG FLAT BRIM CAP

Black. 80% polyacrylic/20% wool. 5-panel cap. Adjustable fit.

**B66954289**



#### AMG KNITTED HAT

Black. 100% cotton. Fold. Knitted white AMG logo.

**B66959208**



#### AMG CAP

White. Outer material 100% polyester, lining 100% cotton. Sandwich in contrasting silver. Side sections with perforation. White inner straps with AMG logo. Rubberised white 3D "AMG" logo. Adjustable fit.

**B66956014**



#### AMG CAP

Black. Outer material 100% polyester, lining 100% cotton. Sandwich in contrasting white. Side sections with perforation. Tonal black inner straps with "AMG" print in white. Rubberised black 3D "AMG" logo. Adjustable fit.

**B66955750**



#### AMG CAP

Black/red. Outer material 100% polyester, lining 100% cotton. Red inner straps with black AMG logo. Red sandwich with white AMG logo. Red embroidered AMG logo on back. Adjustable fit.

**B66956013**





#### AMG TYPO KEY RING

Silver/black/red. Stainless steel/carbon fibre. Flat split ring with three additional mini split rings for quick removal/replacement of individual keys. AMG logo on front. Designed in Germany. Length approx. 9 cm.

**B66953338**



#### AMG KEYCHAIN WITH LIGHT

Carbon fibre. Stainless steel/carbon fibre/plastic. Light function. Fastener with three mini split rings for quick removal/replacement of individual keys. AMG logo on rear.

**B66955215**



#### AMG SNAP-HOOK KEY RING

Black/red. Stainless steel/carbon fibre/aluminium. Snap-hook with twist action to open. Three additional mini split rings for quick removal/replacement of individual keys. Length approx. 10 cm.

**B66953430**



#### AMG PIN

Silver. Stainless steel. Butterfly clasp and anti-twist lock on back. Length approx. 2 cm.

**B66956330**



#### AMG LANYARD

Red. 100% polyester. Snap hook. Click-lock fastener. White AMG logo on the strap, embossed AMG logo on the snap-hook. Length approx. 52 cm, width approx. 2 cm.

**B66959266**



#### AMG LANYARD

Black/white. Stainless steel/plastic/nylon. Nylon strap with removable plastic clip. White AMG logo on the waist. Total length approx. 52 cm. Width approx. 2 cm.

**B66955311**

#### AMG CARBON KEY RING

Carbon-fibre-look leather/stainless steel. Pull/twist mechanism. Three mini split rings for quick removal/replacement of individual keys. AMG logo badge made from leather. Length approx. 10 cm.

Red **B66953427**  
Black **B66953428**



#### AMG BUSINESS KEY RING

Black/silver grey/gun. Leather/stainless steel. Split ring with three additional mini split rings for quick removal/replacement of individual keys. Made in Germany. Length approx. 11 cm.

**B66953824**



A GOOD  
INVEST.



#### MEN'S AMG LEATHER GLOVES

Black. 100% nappa lambskin. Perforated inserts and contrasting silver-grey quilting. Width-adjustable leather strap with Velcro fastener. Made for Mercedes-AMG by Heinz Bauer Manufakt. Sizes 8, 8.5, 9, 9.5.

B66955777-5780



#### AMG BELT

Black. Cowhide. Can be shortened. Length approx. 125 cm.

B66958988



#### AMG WALLET

Black. Cowhide with original seat pattern quilting. RFID protection. Various note, coin, card compartments and slots. Dimensions approx. 12 x 2 x 9.5 cm.

B66958985



#### AMG WALLET

Black. Leather/nylon. Various compartments for notes, coins and cards. RFID protection. Black, gleaming AMG logo print. Made in Germany.

**B66959318**



#### AMG MINI WALLET

Black. Leather/nylon. Various note, coin, card compartments and slots. RFID protection. Black, gleaming AMG logo print. Made in Germany.

**B66959320**



#### AMG MINI WALLET

Black. 100% cowhide with original seat pattern quilting. RFID protection. Various compartments inside. Dimensions approx. 10 x 2.4 x 9.6 cm.

**B66958986**



#### AMG VEHICLE REGISTRATION WALLET

Black. Leather/nylon. Mesh pocket as well as various slots. RFID protection. Black, gleaming AMG logo print. Made in Germany.

**B66959321**



#### AMG CREDIT CARD WALLET WITH MONEY CLIP

Black. 100% cowhide. Three card slots. Money clip. With original AMG seat top stitching with AMG logo pin in gun metal, with black AMG lining. Size approx. 7 x 10 cm.

**B66958987**



#### AMG CREDIT CARD WALLET

Black. Leather/nylon. Practical organisation thanks to four credit card slots and a pocket. RFID protection. Black, gleaming AMG logo print. Made in Germany.

**B66959319**



#### AMG RUCKSACK COMPARTMENT

Black/red. 100% polyester. Can be carried as rucksack or bag. Large main compartment, various inner and side compartments. Rubber feet. Dimensions approx. 55 x 30 x 33 cm. Capacity approx. 54 l.

**B66956101**



#### AMG WEEKEND BAG

Black. Outer material 100% cowhide with original seat pattern quilting on leather in centre. Lining 100% polyester. Large main compartment. Carry handles. Padded shoulder strap. Padding with AMG logo pattern. Dimensions approx. 50 x 30 x 28.5 cm. Capacity approx. 40 l.

**B66958984**



FOR THOSE  
WHO WANT TO  
GO FURTHER.



#### AMG TROLLEY BAG

Black. Hypalon: 70% PVC/30% polyester, lining: 100% polyester. Water-repellent. Stowable telescopic handle with red double rod. Two large rolls with optimum grip. Spacious, lockable main compartment with compression strap. Two mesh zipped pockets under the flap. Padded carry handles. Dimensions approx. 70 x 38 x 25 cm. Capacity approx. 66 l.

**B66956786**





Mercedes-AMG GT R Pro: Combined cycle fuel consumption: 12.4 l/100 km;  
Average CO<sub>2</sub> emissions: 284 g/km



#### AMG ROLL-TOP RUCKSACK

Black. Outer material 70% PVC/30% PES, lining 100% PES. Water-repellent. Day pack can be enhanced. Inside compartment for laptop and iPad. Zipper in main compartment. Drinks compartment on both sides. Patch zipper pocket at the front. Padded shoulder strap with chest strap. Padded back section. Dimensions approx. 30 x 17 x 50 cm. Capacity approx. 25 l.

**B66956785**



#### AMG FUNCTIONAL TOWEL

Black/red. 100% polyester. Elastic black/red suspension strap. AMG outline logo embossing. Size approx. 120 x 60 cm.

**B66959288**



#### AMG DRINKS BOTTLE

Black. Stainless steel. Dishwasher-safe. Volume approx. 0.7 l. Dimensions approx. 7.5 x 7.5 x 25 cm. Made for Mercedes-AMG by eva solo.

**B66958980**



#### AMG TO GO CUP

Black. Stainless steel. Silicone wrist strap. Functional drinking cap. Double-walled. Made for Mercedes-AMG by eva solo. Diameter approx. 7.5 cm, height approx. 20 cm. Capacity approx. 0.5 l.

**B66955082**



#### AMG COMPACT UMBRELLA

Black/white. Aluminium/steel/polyester. Opened manually. Handle loop. With matching EVA case. When open, approx. 90 cm in diameter; length when closed, approx. 20 cm.

**B66958964**



#### AMG CASE FOR iPHONE® X/XS/XR

Black/carbon fibre. Polycarbonate/polyurethane/carbon. Apertures for camera, control buttons and connections. AMG logo. Suitable for wireless charging.

iPhone® X/XS **B66953702**  
iPhone® XR **B66956003**

#### AMG CASE FOR iPHONE® 11 PRO/11

Black/carbon/silver. Polycarbonate/polyurethane/carbon/aluminium. Apertures for camera, control buttons and connections. AMG logo. Suitable for wireless charging.

iPhone® 11 Pro **B66955397**  
iPhone® 11 **B66959094**

#### AMG CASE FOR iPHONE® 11 PRO/11

Black. Polycarbonate/cowhide/metal. Aperture for camera, control buttons and connections. Inner fleece to protect from scratches. Suitable for wireless charging. With original AMG seat pattern quilting.

iPhone® 11 Pro **B66956153**  
iPhone® 11 **B66959095**



#### AMG COVER FOR iPHONE® 12 PRO/12

Black. Polycarbonate/silicone/microfibre. Aperture for camera, control buttons and connections. Suitable for wireless charging. Inner fleece with AMG logo pattern to protect from scratches. White AMG logo.

**B66959444**



#### AMG COVER FOR iPHONE® 12 PRO/12

Red. Polycarbonate/silicone/microfibre. Aperture for camera, control buttons and connections. Suitable for wireless charging. Inner fleece with AMG logo pattern to protect from scratches. White AMG logo.

**B66959445**



#### AMG CASE FOR iPHONE® 11 PRO/11

Black/white. Polycarbonate/silicone/microfibre. Aperture for camera, control buttons and connections. Inner fleece with AMG logo pattern to protect from scratches. Suitable for wireless charging.

iPhone® 11 Pro **B66956154**  
iPhone® 11 **B66959096**

—  
 ANYTHING BUT  
 STATUS QUO.  
 —



#### AMG LAPTOP CASE

Black. Leather/nylon. For laptop sizes up to 13". Black, gleaming AMG logo print. Made in Germany.

**B66959322**



#### MERCEDES-AMG USB-C STICK, 32 GB

Black. Plastic. USB-C connection. High-speed read and write. With USB-C to USB-A adapter Key ring function. Split ring with three mini split rings. Compatible with smartphones, tablets and all standard operating systems. 32 GB.

**B66959923**



#### AMG BALLPOINT PEN

Black. Brass/carbon fibre. Twist cap. Writes in blue. AMG logo on barrel. Made in Germany.

**B66953498**



#### AMG SOUND BALL-POINT PEN

Black. Plastic. Writes in blue. Plays the engine sound of a Mercedes-AMG vehicle at the touch of a button. AMG logo on barrel.

**B66953552**



#### AMG MUG

Outside in matt black, inside in high-gloss black. Porcelain. Vegan. With handle. Capacity approx. 300 ml. Dimensions approx. 11 x 11.5 cm. Made for Mercedes-AMG by KAHLA.

**B66958981**



#### AMG ESPRESSO CUPS, SET OF 2

Outside in matt black, inside in high-gloss black. Porcelain. Vegan. With matching saucers. Embossed AMG logo. Capacity approx. 80 ml. Cup dimensions approx. 5.5 x 8 x 6 cm. Saucer dimensions approx. 11 x 11 x 1.5 cm. Made for Mercedes-AMG by KAHLA.

**B66958982**

### RIDE-ON BOBBY-AMG GT R

Green hell magno. Plastic. LED headlamps and tail lights. Whisper wheels. Suitable for children aged 18 months and up. Manufacturer: BIG Spielwaren. Available from Q2.

B66962008



### AMG MONOPOLY

Special Monopoly version in Mercedes-AMG design. 6 specially designed figures. Suitable for 12 years and up. The Monopoly game is delivered in a separate box.

B66956001



### RIDE-ON BOBBY-AMG GT

Silver-coloured. Suitable for children aged 18 months and up. Manufacturer: BIG Spielwaren.

B66962006





Mercedes-AMG GT R: Combined cycle fuel consumption: 12.4 l/100 km; Average CO<sub>2</sub> emissions: 284 g/km



## 127

CHILD SEATS



SECURE  
YOUR  
DEAREST.



**AMG KIDFIX XP,  
WITH ISOFIX**

The Mercedes-AMG "KIDFIX XP" child seat is suitable for children between the ages of around 3.5 and 12 years (body weight of 15 to 36 kg) and features ISOFIX attachments. The removable and washable lining (black/red) in an exclusive AMG design is made of genuine Mercedes-AMG sports car materials. Made in Germany.

**A0009703302**

—  
SMALL CHILD.  
GREAT SAFETY.  
—



#### KIDFIX XP CHILD SEAT, WITH ISOFIX

The Mercedes-Benz "KIDFIX XP" child seat is suitable for children between the ages of around 3.5 and 12 years (body weight of 15 to 36 kg) and features ISOFIX attachments. The removable and washable lining (black/grey) features an exclusive design. Made in Germany.

A0009704902



#### DUO PLUS CHILD SEAT, WITH ISOFIX

Mercedes-Benz "DUO PLUS", suitable for children between the ages of around 9 months to 4 years (9 to 18 kg) featuring ISOFIX attachments. The removable and washable lining (black/grey) features an exclusive design. Made in Germany.

A0009704302



#### BABY-SAFE PLUS II CHILD SEAT

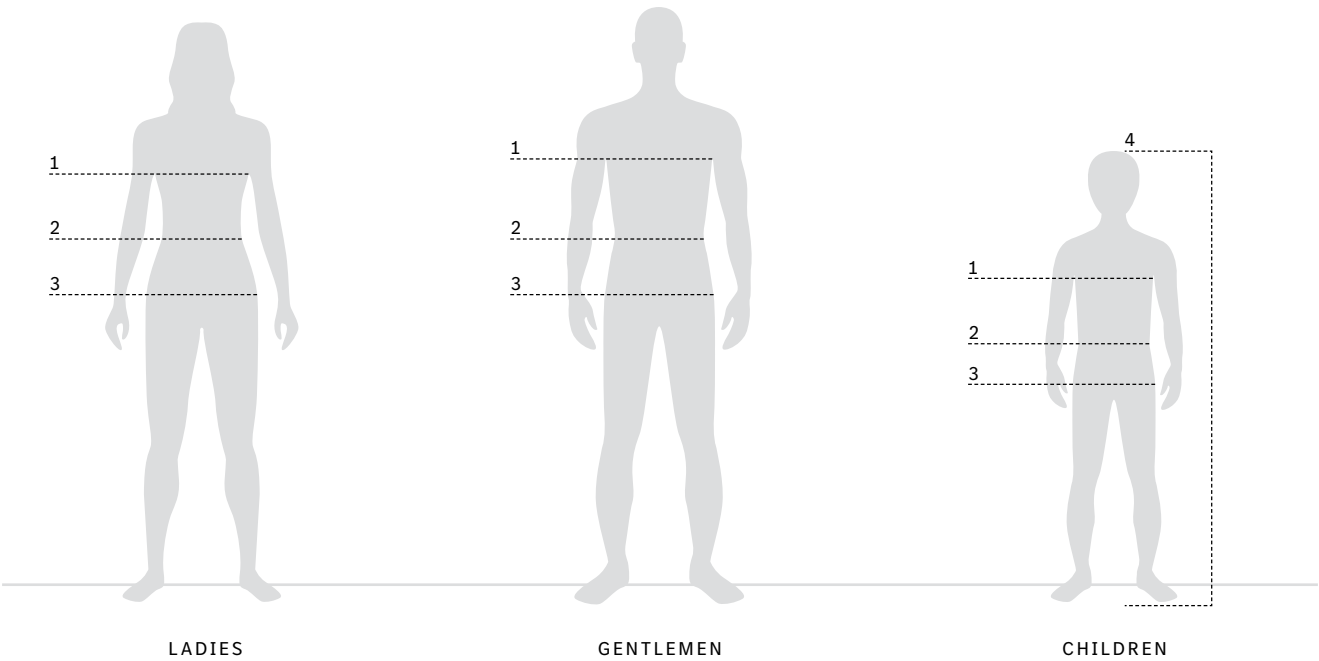
Mercedes-Benz "BABY-SAFE plus II" for babies from birth up to an age of 15 months (up to a body weight of 13 kg). With sun-screen and removable as well as washable lining in an exclusive design (black/grey). Made in Germany.

A0009703802

## FILTER CATEGORIES FOR SUNGLASSES

Four filter categories are used for sunglasses, based on the degree of tint.  
Please use the table below to decide which category best suits your needs.

Category	Tint	Anti-glare protection for lighting conditions
1	20-57%	Light protection for overcast days
2	57-80%	Normal protection for summer days in Central Europe
3	80-92%	High dazzle protection for expanses of water, beaches and mountains, plus Southern European countries; from 90% tint not suitable for driving!
4	92-97%	Maximum protection for high mountains and glaciers; not suitable for driving!



## CLOTHING SIZES

The tables below are designed to help you find your perfect size. It is important to take your measurements correctly. For best results, you should be relaxed and wearing only your underwear. Ideally you should use a tape measure which you should keep close to the body. If you have someone to help you, it will be easier and more precise.

1. **Chest:** keeping the tape measure horizontal, measure around the fullest part of the chest
2. **Waist:** measure around the waist without drawing the tape measure too tight
3. **Hips:** keeping the tape measure horizontal, measure around the fullest part of the hips
4. **Height (for children's clothing):** measure from the top of the head to the sole of the feet without shoes

**Please note:** Separate tables are provided for the PUMA brand and the official MERCEDES AMG PETRONAS motorsports clothing.

## LADIES

SIZE	XS	S	M	L	XL
Chest (cm)	77-82	83-88	89-94	95-100	101-106
Waist (cm)	61-66	67-72	73-78	79-84	85-90
Hips (cm)	87-92	93-98	99-104	105-110	111-116

## GENTLEMEN

SIZE	XS	S	M	L	XL	XXL	XXXL
Chest (cm)	85-90	91-96	97-102	103-108	109-114	115-120	121-126
Waist (cm)	78-82	83-87	88-93	94-99	100-105	106-111	112-117
Hips (cm)	89-94	95-100	101-106	107-112	113-118	119-124	125-130

## CHILDREN

SIZE	116/122	128/134	140/146	152/158
Age (years)	6-7	8-9	10-11	12
Chest (cm)	58-62	63-68	69-74	75-80
Waist (cm)	55-56	57-59	60-62	63-65
Hips (cm)	62-67	68-73	74-80	81-87
Height (cm)	114-125	126-137	138-149	150-161



+ ALL OFFICIAL



AMG  
PETRONAS  
MOTORSPORT

## LADIES

SIZE	XS	S	M	L	XL
Chest (cm)	82	86	91	96	101
Waist (cm)	65	68	74	80	86
Hips (cm)	93	96	101	106	112

## GENTLEMEN

SIZE	XS	S	M	L	XL	XXL
Chest (cm)	84	92	100	108	116	124
Waist (cm)	76	82	88	96	104	114
Hips (cm)	88	95	102	110	118	126

## CHILDREN

SIZE	104	116	128	140	152
Chest (cm)	56	59	64	70	76
Waist (cm)	53	55	59	63	67
Hips (cm)	59	63	69	75	81
Height (cm)	104	116	128	140	152



LADIES

SIZE	XXS	XS	S	M	L	XL	XXL
Chest (cm)	78	82	86	91	96	101	107
Waist (cm)	62	65	68	74	80	86	114
Hips (cm)	90	93	96	101	106	112	118

GENTLEMEN

SIZE	XXS	XS	S	M	L	XL	XXL	XXXL
Chest (cm)	89	91	93	97	102	112	120	130
Waist (cm)	77	79	81	85	92	105	114	122
Hips (cm)	92	94	97	99	103	110	117	124

CHILDREN

SIZE	116/122	128/134	140/146	152/158
Age (years)	6-7	8-9	10-11	12
Chest (cm)	58-62	63-68	69-74	75-80
Waist (cm)	55-56	57-59	60-62	63-65
Hips (cm)	62-67	68-73	74-80	81-87
Height (cm)	114-125	126-137	138-149	150-161

AMG PERFORMANCE WEAR HANDCRAFTED BY ASSOS OF SWITZERLAND

MEN’S TOPS

SIZE		XS	S	M	L	XL	XXL	XXXL	XXXXL
Chest (cm)		88-91	92-95	96-100	101-106	107-113	114-121	122-129	130-137

LADIES’ TOPS

SIZE	XXS	XS	S	M	L	XL	XXL	XXXL
Chest (cm)	73-78	79-84	85-90	91-97	98-105	106-113	114-121	122-129

MEN’S TROUSERS

SIZE		XS	S	M	L	XL	XXL	XXXL	XXXXL
Waist (cm)		75-78	79-81	82-85	86-91	92-97	98-105	106-113	114-121

UNISEX TOPS

SIZE	0	I	II	III
Chest (cm)	88-95	96-105	106-120	121-135

UNISEX TOPS

SIZE		XS	S	M	L	XL	XXL	XXXL	XXXXL
Chest (cm)		88-91	92-95	96-100	101-106	107-113	114-121	122-129	130-137

SOCKS

SIZE	0	I	II
Size	36-39	40-43	44-47

## LADIES

SIZES	INTERNATIONAL EQUIVALENTS				
	DEU	UK	FRA	ITA	SP
XXS	–	6	34	36	36
XS	34	8	36	38	38
S	36	10	38	40	40
M	38	12	40	42	42
L	40	14	42	44	44
XL	42	16	44	46	46
XXL	44	18	46	48	48

## GENTLEMEN

SIZES	INTERNATIONAL EQUIVALENTS				
	DEU	UK	FRA	ITA	SP
XXS	38	38	38	38	38
XS	40/42	40/42	40/42	40/42	40/42
S	44/46	44/46	44/46	44/46	44/46
M	48/50	48/50	48/50	48/50	48/50
L	52/54	52/54	52/54	52/54	52/54
XL	56/58	56/58	56/58	56/58	56/58
XXL	60/62	60/62	60/62	60/62	60/62

## CHILDREN

SIZES	INTERNATIONAL EQUIVALENTS				
	DEU	UK	FRA	ITA	SP
XXS	104	3/4	4	104	4
XS	116	5/6	6	116	6
S	128	24/25	8	128	8
M	140	26/28	10	140	10
L	152	30/32	12	152	12
XL	164	32/34	14	164	14
XXL	176	34/36	16	176	16

TOGETHER  
FOR BEST  
QUALITY.

Lanybook®

GARMIN®

MiaCara®

eva solo

BRUNER

ANSMANN®

m-cro

LAMY  
Design. Made in Germany.

Scobra

BRIC'S  
MILANO

TOMMY HILFINGER

Samsnite

PUMA®

ic! berlin



ZIPPO

CLIP  
THE WALLET

VICTORINOX

TaylorMade®

WMF

NICI®

BABYNOVA

KAHLA  
Made in Germany. Since 1844.

HEINZ BAUER  
MANUFAKT

handpressa  
anywhere

BIG

emsa

KJ  
KARL JOSEF SCHMID  
LEDERWARENREKTION

UNESCO

MÖVE  
PROFESSIONAL

As at: January 2021. Please note: Changes may have been made to the products since this publication went to press (01/2021). The manufacturer reserves the right to make changes to the design, form, colour and specification during the delivery period, provided these changes while taking into account the interests of the vendor can be deemed reasonable with respect to the purchaser. Where the vendor or the manufacturer uses symbols or numbers to describe an order or the subject of an order, no rights may be derived solely from these. The illustrations may include accessories and items of optional equipment which are not part of the standard specification. Colours may differ slightly from those shown, owing to the limitations of the printing process. This publication may include products and services which are not available in certain countries. Information given regarding statutory regulations, legal requirements and taxation and the consequences thereof applies to the Federal Republic of Germany only and is correct at the time of going to print. Please consult your Mercedes-Benz Retailer for final details.

Provider: Mercedes-Benz AG, Mercedesstr. 120, 70372 Stuttgart

3220 · 1010 · 02-01/0321 Printed in the Federal Republic of Germany  
© Copyright 2021 Mercedes-Benz Customer Solutions GmbH. All rights reserved.